

VISTA V2

Simple, Powerful, Visual

Public Software Release Notes

Software version:	2.2.10338	Released on:	7 September 2012
Supersedes version:	2.1.9945	Released on:	13 July 2012

Public Software Release Notification

Application installation packages for this software release are available for consoles, Windows PC and Mac OSX.

Installation of this software version on an L5, T4, T2 or I3 will require using the ISO image file to update.

New Features and Improvements

- **Preset and Extract Editing**

- Preset and Extract editing is now available in the timeline editor
- Presets and Extracts now open up in the timeline by default

- **Preset Dialogue**

- Added preview to Preset Dialog
- Added Fixture Type Default option to Preset dialog
- Auto disabled global defaults for position presets

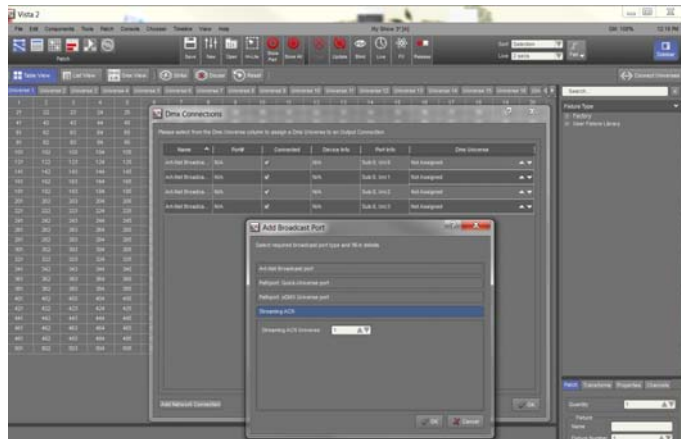
- **MIDI**

- MIDI Notes has been implemented. This is available in the "User Preferences"
- Native MIDI support on Mac and PC
- Added the ability to activate snapshots via the MIDI Show Control "FIRE" command

- **Communication Protocols**

- Streaming ACN has been implemented. To access this:-

- Go to the “Connect Universes” dialogue;
- Select “Add Network Connection”;
- The “Add Broadcast Port” dialogue will appear;
- Select “Streaming ACN” and connect universes as required.



- **Fixture Control**
 - High End fixture gobo spin backwards is now supported
- **Hardware**
 - Added a user preference for encoder acceleration
- **Multi-element fixture swapping**
 - Added
- **Cuelist Properties**
 - Auto Move in Black has been implemented
- **GUI**
 - Robe Robin Pinspot displays as 3 inset rings similar to the Showgun
- **Command Line Functions**
 - Added simple command line functions (f = select fixtures / fixtures ids), (@ = patch at universe.channel, additional @ = multipatch at universe.channel)
- **Fixture Library**
 - An updated fixture library

Bugs fixed in this release

Bug	Description
4203	Various issues with M1 and S1 LED's not working correctly
4204	The DBO LED now uses Vista v1 functionality
4720	Added a "Rescan for USB Devices" button in Connect Universes dialog
4785	the +5%, -5%, 10%, -10% buttons now work correctly with ranges of intensity values
4872	Playing a cuelist with Fader Intensity Mode set to Submaster would no longer snaps between cues
4873	Arm and close now works correctly
4877	Assign audio no longer causes the application to crash
4886	Selecting Gobo on Superplayback and turning encoder no longer crashes if no gobo fixtures selected
4891	Fader assignments disappear from physical and virtual playback
4898	Fixed a crash when opening an imported show with a user fixture copied from a fixture type deleted from library.
4900	SmartFX playback controls malfunction when multiple effects active in same cuelist
4967	Disable "Release On Override" option in cuelist properties dialog when HTP is enabled)
4973	Fixed the problem where Blocked cues used to go black when using update
4974	Fixtures disappearing from patch and unable to repatch
4986	Copy and Paste duplicates inserted commands
4988	Can't uncheck fader levels option in snapshot dialog
4996	Disabled the deletion of show items from favourites quick picker. Now only the icon is removed.
5002	Rate, Size and Phase Control disappeared from Smart FX encoders on Superplayback
5004	Console buttons no longer stop working after show load
5030	Installer displays build number as 2.1 when it is a 2.2 build
5031	No splash screen appearing on start up
5039	Options in drop down boxes not visible until after moving the cursor over
5040	Can't assign individual background images to layouts
5063	Cuelist will not release when overridden when containing cue stored with store all. Now cuelists will only be set to htp when they are being created, not when having steps added to them.
5067	Robe robin rings difficult to see when fixture is black. Changed border from black to dark gray.
5069	The "Stop effects" option in feature palettes does not always insert events with the active preset where applicable
5071	Move In Black not working if other fixtures were programmed in the MIB cue
5074	Effect events lose presets when created
5075	Fast forwarding over a cue with an embedded "Assert" command causes crash
5077	Midi note command 'Play/Release' doesn't play 2nd time in repeated situations
5097	change fixture type (all of selected type)' patch function" now works correctly
5152	Manual crossfader producing unexpected results
5153	Crash when deleting only cue in a cuelist
5157	Colour Mix Swing effect for some CMY fixtures broken in all 2.2 releases
5160	Strike and reset macros don't terminate
N/A	The create preset dialog now automatically selects an appropriate response for Global and FixtureType default options
N/A	The preset dialog will select 'OK' when pressing the Enter key
N/A	Fixed the problem of playback control window not displaying various columns in old shows
N/A	Fixed a bug in releaseOnOverride
N/A	Eliminated the lag seen when the system is heavily loaded when pressing select buttons on console playbacks.
N/A	Fixed an issue where autoplay and release clips wouldn't play via flash button if associated fader was not an intensity fader.
N/A	Fixed a bug where snap events could sometimes be missed when looping around a cuelist end. Found by using Move IN Black on the first cue with gobo data.
N/A	Fixed poor drawing performance in chooser when background image is used

- N/A Improved performance of timecode enabled cuelists
- N/A Cuelists are now disarmed automatically when released.
- N/A Fixed a bug where changing a page or fader level would disarm timecode enabled cuelists.
- N/A Fixed a crash when trying to advance to the next wheel using the superplayback when the selected fixture(s) don't have any colour wheels.
- N/A Release ALL will disarm ALL timecode cuelists. The status Message now pops up centered with the main application and will expand to show new messages
- N/A Changed the timing entry in the following ways:-
 - + using 1:20 or 1m 20s notation will no longer automatically changed to / from timecode mode
 - + timecode times are now entered in the following formats:-
s s;f ;f m:s m:s;f h:m:s h:m:s;f or h:m:s:f
 - + using a negative value for frames is allowed ... is 1m -2f is two frames before one minute
- N/A Added the timecodeStartDialog for setting the timecode start time of a cuelist
- N/A Removed the confusing timecode offset from the cuelist properties
- N/A Fixed an intermittent crash of Autosave while adjusting inter-cue timings
- N/A The "Stop effects" option in feature palettes now inserts events with the active preset where applicable
- N/A Highlight preset now excludes position information by default
- N/A Learn timing mode now adds cues to the end of a cuelist rather than wrapping around to the start
- N/A Fixes to the Update/Edit Preset code to make the Blind/Non-blind editing more obvious and to make GlobalPresetValues more user friendly when updating
- N/A Fixed swing point and colour preset translations on fixtures from colour mix to wheel
- N/A Fixed the "load show with old fixtures is broken" bug.
- N/A Features erroneously appearing in the misc tab of the custom feature panel.

Software Problems

We ask that users of the software report ALL cases of crashes or incorrect operation to support@jandsvista.com. Please include as much detail as possible, such as:

- The full software version number you were using and platform.
- An exported copy of the showfile you were using.
- Crash logs or diagnostic reports if available. On a Linux console diagnostic reports can be generated by pressing CTRL+ALT+DEL and then exporting files in the same manner as crash logs.
- Detailed information about the problem you were seeing, what you were trying to do, and how you tried to do it. If possible, try to recreate the problem and tell us how. The three questions that help us help you are:-
 - What did you do?
 - What did you expect to happen?
 - What actually happened?
- A video or screen capture of the problem is an excellent way of showing us the bug.

Compatibility with Vista 1.13

Vista 1.13 fixture library files and show files CANNOT be used with Vista V2. Vista 1.13 patch files can be exported and subsequently imported into Vista V2.

Vista V2 and Vista 1.13 can be installed on the same computer, but should not be running simultaneously. If you intend to use Vista 1.13 and Vista V2 with an S3, S1, M1, UD512 or E2 wing, you will need to update Vista 1.13 to the latest release of that software (1.13.5295 or later). Please see Appendix D for more details on switching USB consoles between Vista V2 and Vista 1.13.

Jands Vista V2 includes many changes and enhancements from Vista 1.13. While the application functions similarly to Vista 1.13, time should be allowed for getting to know the software, as there are significant differences that may take time to get used to, in terms of both placement of functions and actual operation.

Installing the Vista V2 Console Image on a T2, T4 or I3 console installs both Vista 1.13 and Vista V2 software onto the console hard disk, allowing you to easily switch between using the Vista V2 software and the latest Vista 1.13 software by selecting the appropriate boot-mode during start-up.

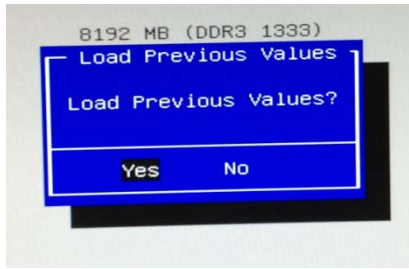
To select the desired boot mode:

1. Start the console. Press the down arrow as soon as you see the large Vista logos. This will prevent the console from booting automatically.
2. Use the up and down arrows to choose one of the following the boot options:
 - **vista2 (Normal)** – Vista V2
 - **vista2 (VNC)** – Vista V2 with VNC server running
 - **vista1** – Vista 1.13
 - **vista1-VNC** – Vista 1.13 with VNC server running
3. Press the Enter key to start the console in the selected mode. Note that if an I3 console is to be changed from Vista V2 to Vista 1.13, the red and yellow modifiers must be held down when powering up until "Vista 2.x" is displayed in the upper-left LCD.

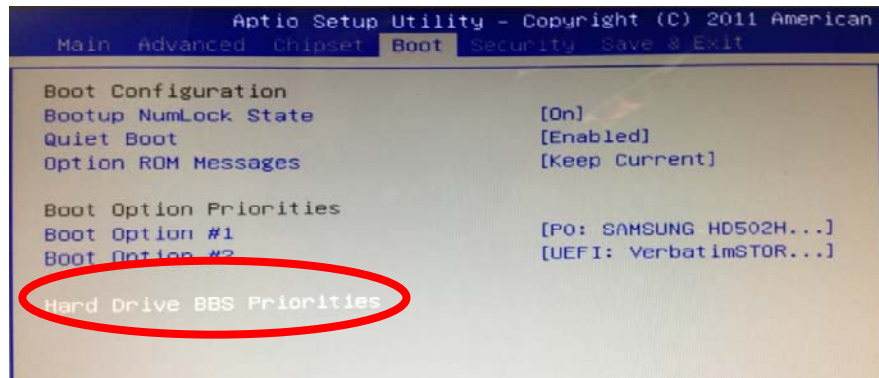
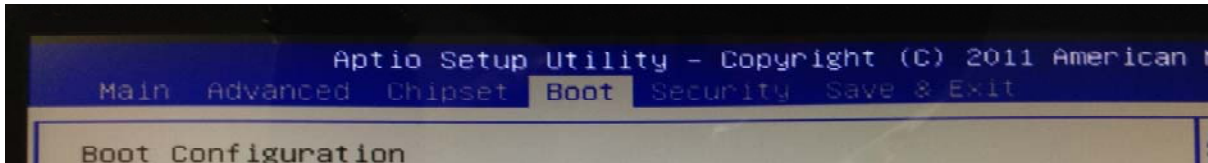
Installation Instructions (L5 Consoles)

To install the Vista v2 Console Image:

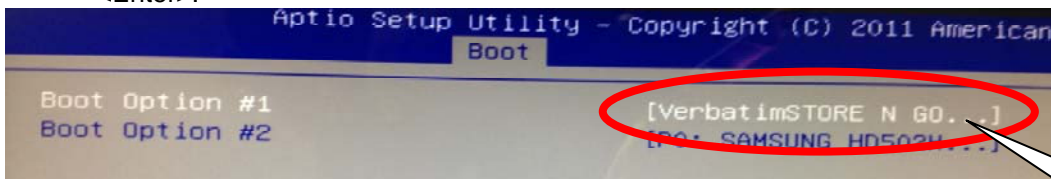
1. Insert the USB device into a console USB port.
2. Power on console.
3. Press the "F2" button repeatedly while the console boots up until the console goes into the BIOS menu. (The screen will be upside down.) The following dialogue box will appear:



4. Select "No" and press <Enter>.
5. Using the navigation arrows on the keyboard, navigate to the "Boot Menu" and press <Enter>. The console will display the available Boot parameters.



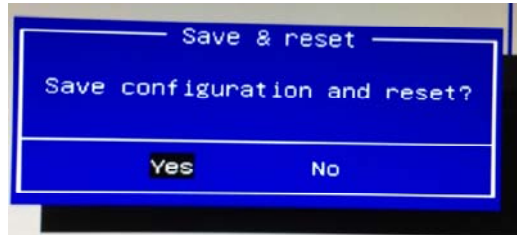
6. Navigate to "Hard Drive BBS Priorities" and press <enter>. The console will display the current boot device order.
7. Select "Boot Option #1" and press <Enter>. The console will display a list of the bootable devices it has found.
8. From this list highlight the device that is the USB FLASH drive you wish to boot from and press <Enter>.



Bootable USB Device

9. Press "Esc" to exit
10. Navigate to the "Save and Exit".

11. The system will now ask you to save all settings. Select "Yes" and press <Enter>.



The system will now exit the BIOS menu and boot from the USB device.

There is no requirement to reverse this process when booting the console normally.

To install a Vista v2 Console Update package:

If Vista v2 has been previously installed on a console, it is possible to apply most new software updates via a smaller Vista v2 Console Update package. Major releases will still require a full .iso image installation. To install a Vista v2 Console Update, first download the update file onto a USB flash drive, or FTP the file into the /Vista v2/UserData/Updates directory on the console.

1. Boot the console into Vista v2.
2. If updating via USB stick, insert the USB stick into a console USB port.
3. Select File → Quit Application. Wait for the System Settings dialogue to appear.
4. Click on 'Apply Update'.
5. Click 'Browse'.
6. If updating by USB, click on the USB flash drive in the list. If the file has been transferred via ftp, navigate to /Vista v2/UserData/Updates.
7. Select the desired update file.
8. Click "Open".
9. The update package will appear on the left hand side of the dialogue. Click on the update package. The package contents are now inspected – wait until the cursor changes back from the hourglass.
10. Click 'Apply Update'. The software will now install the update package. When complete, a new dialogue will appear, warning that the console must be rebooted for the update to take effect.
11. Click 'OK'.
12. Click 'Quit'. T and L series consoles will now power down, while I3 consoles will reboot.

Installation Instructions (T2, T4 & I3 Consoles)

If installing Vista V2 software on a Vista T2, T4 and I3 console for the first time, the hard-drive in these consoles must be re-imaged from CD or USB stick, using the Vista V2 Console Image file.

Warning! Installation of this software on a T2, T4 or I3 console will erase all saved shows and other data. You must manually backup or archive all your existing show data (the contents of the /data/

directory) to an external storage device.

When T2 and T4 consoles start in Vista V2 for the first time the inbuilt Tablet / LCD and any additional monitors, touch screens or tablets may not be configured automatically. This may result in incorrect operation of the pen, and an upside-down display in some consoles. See the Known Issues section of these release notes for details on how to rectify this.

After installing the Vista V2 Console Image for the first time, subsequent Vista V2 Console Images can be applied with a "Re-use" option, which retains the existing hard-drive partitions, screen configurations, and User Data files. Also, application-only update packages can be applied using the Vista V2 Console Update files, and update package files for Vista 1.13.

To install the Vista V2 Console Image:

1. Download the latest Vista V2 Console Image file and burn it to a CD, or create a bootable USB drive. Instructions for how to create a bootable USB drive can be found in Appendix C of these release notes.
2. Insert the CD or bootable USB drive and restart the console. Note the BIOS settings in some older consoles may not have USB enabled as a boot device. If you have connected your bootable USB drive to your console, but the console still boots normally, please download the Vista T Series BIOS Restore Instructions from www.jandsvista.com and verify the BIOS settings are correct.
3. When the console is finished booting, the Console Software Installer will open. Note the Pen will not work during installation; use the touch pad or a mouse instead.
4. To install the dual boot software make sure that both the Vista1 and Vista2 check boxes are selected and click the Next button. The Confirm Installation window will open.
5. Select a Hard Disk to install to in the Target Disk Device box and select 'Yes' in the Proceed with Installation box.
6. Select 'Initialise' in the Partitions box, or if Vista V2 has been installed previously select 'Re-use', and click on the 'Next' button to start the installation. Note this will completely erase the hard disk – be sure you have already backed up any important data.
7. When the installation is complete, click the 'Next' button
8. Click the finish button to eject the CD (if present) and shutdown the console. Remove the USB drive or CD from the console.
9. When the console has fully shut down, press the Power button to restart the console.

To install a Vista V2 Console Update package:

If Vista V2 has been previously installed on a console, it is possible to apply most new software updates via a smaller Vista V2 Console Update package. To install a Vista V2 Console Update, first download the update file onto a USB flash drive, or FTP the file into the /Vista V2/UserData/Updates directory on the console.

13. Boot the console into Vista V2.
14. If updating via USB stick, insert the USB stick into a console USB port.
15. Select File → Quit Application. Wait for the System Settings dialogue to appear.
16. Click on 'Apply Update'.

17. Click 'Browse'.
18. If updating by USB, click on the USB flash drive in the list. If the file has been transferred via ftp, navigate to /Vista V2/UserData/Updates.
19. Select the desired update file.
20. Click "Open".
21. The update package will appear on the left hand side of the dialogue. Click on the update package. The package contents are now inspected – wait until the cursor changes back from the hourglass.
22. Click 'Apply Update'. The software will now install the update package. When complete, a new dialogue will appear, warning that the console must be rebooted for the update to take effect.
23. Click 'OK'.
24. Click 'Quit'. T series consoles will now power down, while I3 consoles will reboot.

Unlike Vista 1.13, in Vista V2 there is no simple way to revert an update. If it becomes necessary to revert to a previous version the console must be re-imaged.

Installation Instructions (Windows XP, Windows Vista & Windows 7)

The Vista V2 software can be installed on a Windows PC running XP, Vista, or Windows 7. Both 32 and 64 bit versions of Windows are supported. The recommended PC should have an Intel i3 CPU, 2GB RAM, and 500MB disk space.

Note that if Vista 1.13 is to be run on the same machine, the Vista 1.13 version must be 5295 or later.

To install Vista V2 Windows Update files on a PC:

1. Close all open applications.
2. Disconnect/switch off all Jands Vista USB devices.
3. Launch the Vista V2 Windows Installer file. If an earlier version of Vista V2 is already installed on the PC, there's no need to un-install it - simply install the new version over the top of the old one.
4. Click 'Next'.
5. A location for the installed files is selected automatically. If required you can change the location. Click 'Next'.
6. A location for the User Data folder (your show files etc) is selected automatically. If required you can change the location. Click Install.
7. When the installation is complete, click Finish.

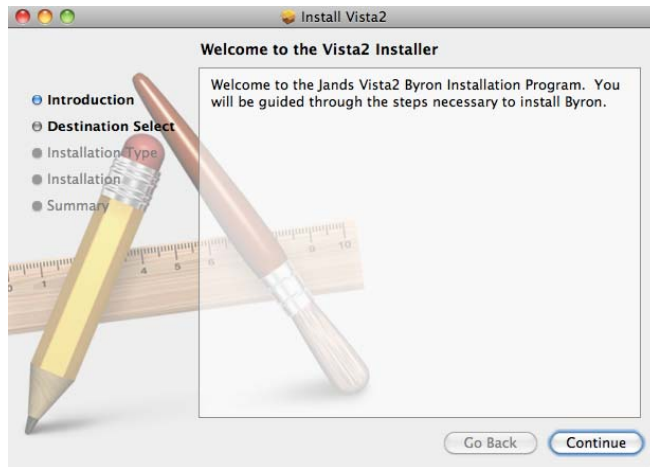
It is strongly recommended you now setup your PC to automatically generate crash report files.

Details of how to do this can be found at <http://www.jandsvista.com/downloads/Tbilt134.pdf>

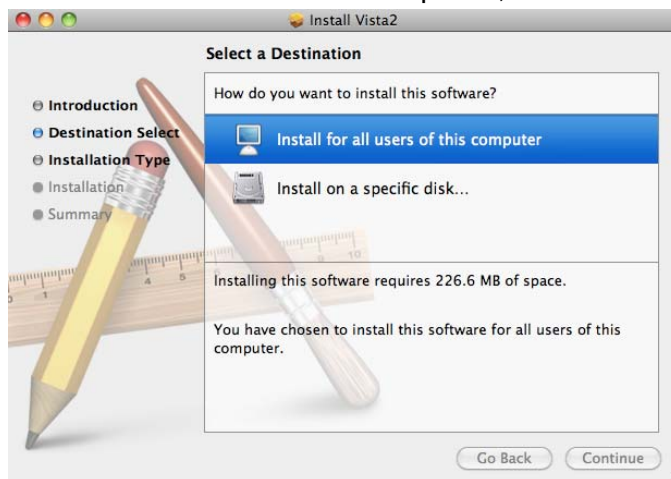
Installation Instructions (Apple Mac)

The Vista v2 software can be installed on an Apple Mac running OSX Snow Leopard or later.
Note that if Vista 1.13 is to be run on the same machine, the Vista 1.13 version must be 5295 or later.

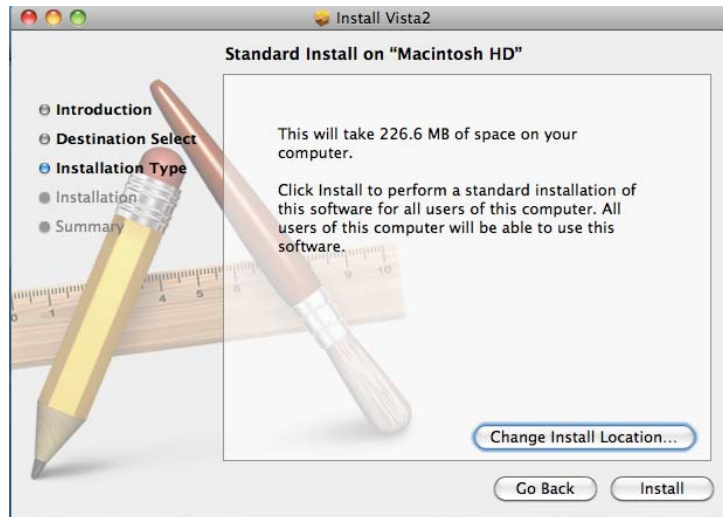
1. Double-click on the Mac installer package downloaded from www.jandsvista.com to launch the installation wizard
2. At the Introduction window, click "Continue"



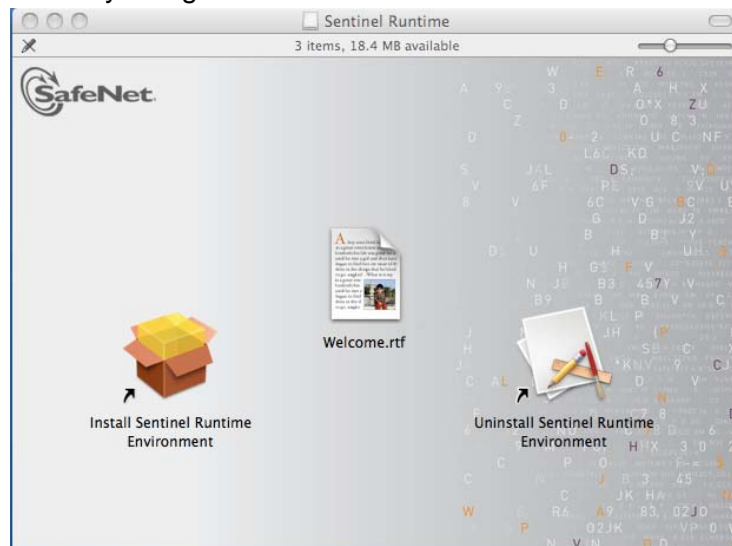
3. If this is the first time you are installing Vista, you will be asked to Select a Destination for the installation. Click on "Install for all users of this computer", and then click "Continue"



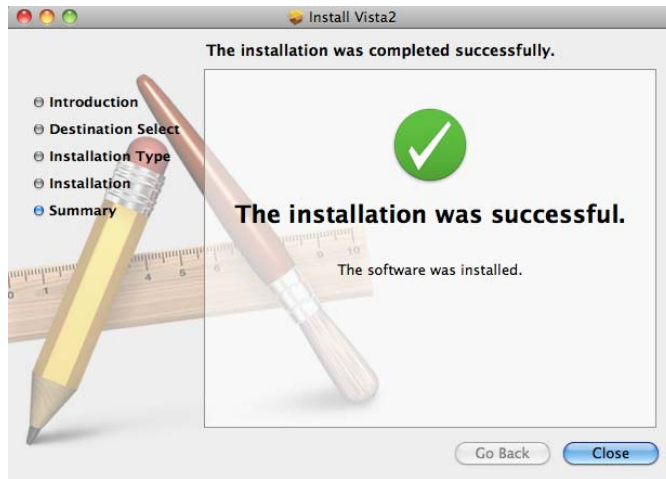
4. At the Installation Type window, click "Install"



5. You may be prompted for a password. If so, enter your password and click "OK". If you choose to install the application to a non-default location, please ensure that this location has full read and write permissions.
6. During the installation procedure, a Sentinel Runtime window will appear, to install software to operate the USB Security Dongle.



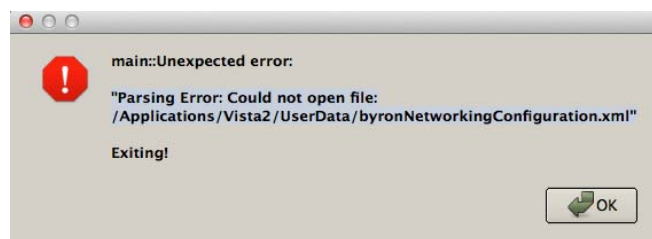
7. If you have previously installed the Sentinel Runtime, please skip this step. Otherwise:
 - a. Double click on the "Install Sentinel Runtime Environment" icon to launch the installation wizard
 - b. A notification will appear advising that this package will run a program to determine if the software can be installed. Click "Continue".
 - c. At the Introduction window, click "Continue"
 - d. At the License window, click "Continue"
 - e. Ensure you read and agree to the terms of the software license, and click "Agree"
 - f. At the Installation Type window, click "Install"
 - g. At the Summary window, click "Close"



Your software has now been installed.

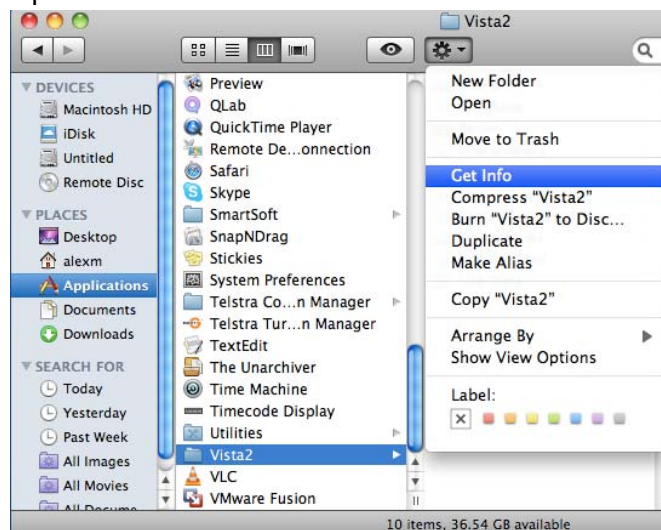
Common OSX Installation Problems

If the installation folder does not have the correct read and write permissions set, users will get the following error when running the application:-

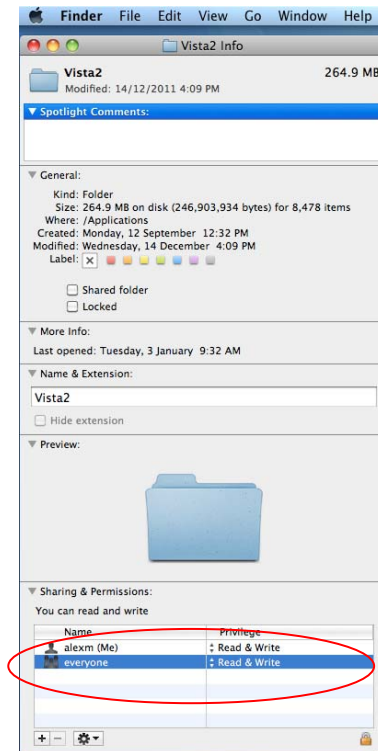



To fix this problem:

1. Using "Finder" navigate to the Vista 2 folder.
2. Select the folder and press "Get Info"



3. The folder will be illustrated as below:-



4. Highlight the user and change Privilege to “Read and Write”.
5. Click on the  icon and then apply to all enclosed items by saying “Yes”.
6. Once this has been completed run the application again.
7. Some users find that the application may not run at this stage but it is then resolved by running the whole installation process again.

Known Issues

Bug 3844: Tablet in T2 and T4 consoles is not automatically configured after re-imaging to Byron software

When T2 and T4 consoles start in Byron for the first time the inbuilt Tablet / LCD and any additional monitors, touch screens or tablets are not configured automatically. This will result in incorrect operation of the pen, and an upside-down display in some consoles. To configure the displays:

1. Using a mouse or the inbuilt trackpad, select File > Quit Application
2. In the System Settings dialogue that appears, click on “Display and Input Devices”
3. Choose the main Tablet / LCD type from the Screen #0 drop down. Normally this will be Wacom PL550 for V1 consoles or Wacom DTI520 for V2 or V3 consoles
4. Choose the external monitor 1 type, if connected, from the Screen #1 drop down. Byron supports the following monitors:
 - a. Wacom pen tablet models PL550, used in version 1 consoles,
 - b. Wacom DTI520 used in version 2 consoles.
5. ELO touch monitor “Intellitouch” models eg ET1715L.
6. Choose the external monitor 2 type, if connected, from the Screen #2 drop down.
7. Click OK to reset the graphics system

Bug 4534: OSX Tracking Backup Network Issues

There are a number of instances where network conflicts can arise when using tracking backup on OSX platform. These are particularly prevalent when the system has an active Airport adaptor. These can be eliminated by ensuring Airport is disabled in your system.

Jands recommends disabling Airport before using Tracking Backup.

Appendix A: Creating a Bootable USB Drive

Major upgrades, that require the console's hard drive to be erased, can be installed from a suitably formatted USB device. To create a USB FlashDrive that can be used to reinstall the operating system and Vista software on a T or I series console follow the steps below.

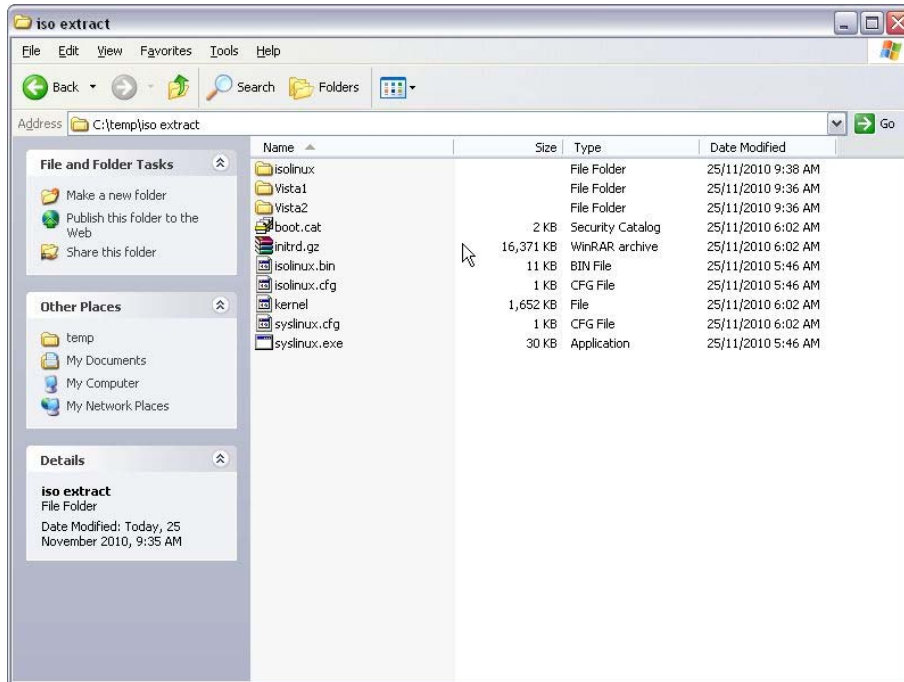
Using a PC

To use a USB flashdrive to boot the console and re-install the software, the drive needs to be 2GB or larger and it has to be converted into a Linux system disk. This procedure will erase all data on the FLASH drive and format it.

Once the FLASH drive has been converted, or if you have the original USB flashdrive supplied with your I3, you can use it for future updates. In this case please skip to step 4.

To convert the flash drive to a Linux System disk:

1. Some FLASH drives come with pre-installed software to help users manage the files on the drive. Uninstall this software.
2. Right-click on the USB Flash drive and selecting the 'Format' option from the popup menu. Take care that you have selected the Flash drive. If you select your computer's hard disk by mistake, you could erase it completely. Ensure the File System option is set to "FAT32" before clicking the 'Start' button.
3. Download and install a ISO file extractor program such as WinRAR. WinRAR is available from <http://www.rarlab.com>
4. Download the latest console ISO installer.
5. Open the console ISO image file with WinRAR.
6. Extract all of the files and directories within the ISO file to a temporary directory on your hard drive, for example to c:\temp\iso_extract. After the files have been extracted the directory should look something like the figure below:



7. Close the ISO file extractor.
8. Using a file manager, navigate to the `isolinux` directory of the extracted files, for example navigate to `c:\temp\iso_extract\isolinux`.
9. Copy all of the files from the `isolinux` directory to the 'root' of the extracted files eg from `c:\temp\iso_extract\isolinux` to `c:\temp\iso_extract`.
10. Copy all of the files and directories from the temporary directory eg `c:\temp\iso_extract` onto the root of the FLASH drive. Keep all files in the directories they were uninstalled in. This step takes a significant amount of time. When the copy is complete, the drive directory should look similar to the previous Figure.
11. Note the drive letter assigned to the Flash drive by Windows, e.g. 'E'. Open a command prompt and using this drive letter, type the following:

```
[Flash Drive letter]:syslinux -ma [Flash Drive letter]: -f
```

For example:

```
E:syslinux -ma E: -f
```

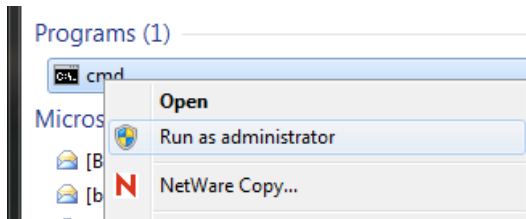
The FLASH Drive is now ready for use. Don't forget to eject the drive using the normal Windows procedure.

Please note: if using Windows 7 please ensure that you are running the command prompts as administrator. This is different to having administrator rights on a Win7 machine. To do this:-

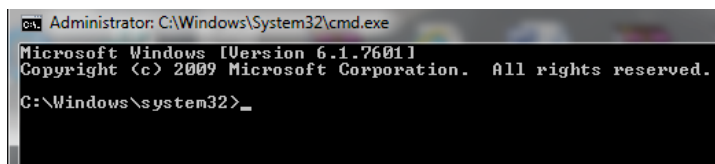
- *open the command prompt*
- *right click on the 'cmd' icon*



- *Select 'Run as Administrator'*



- *The command window will indicate status in top left corner*



- *Then type the commands as instructed above.*

Appendix B: Using S3, S1, E2 or M1 consoles with both Vista V2 and Vista 1.13

Using S3, S1 & M1

If Vista V2 is to be used on the same PC as Vista 1.13, Vista 1.13 must be version 5295 or later. Installations of both Vista V2 and Vista 1.13 may be installed on the same computer, but only one can be running at any one time.

Disconnect all Jands Vista USB devices before installing the new version of Vista 1 and Vista V2. Once both programs are installed, follow the procedures below to switch USB consoles between the two applications

To change from Vista 1.13 to Vista V2 (ie upgrade):

1. Exit Vista.
2. Disconnect or switch off any Jands USB consoles.
3. Launch Vista V2.
4. Reconnect or switch on the USB consoles.

To change from Vista V2 to Vista 1.13 (ie revert):

1. Exit Vista V2.
2. Disconnect or switch off any Jands USB consoles.
3. Launch Vista.
4. Press and hold the yellow and red modifiers on each USB console.
5. Reconnect or switch on the USB consoles.

Using an E2

Hold the 3rd and 4th buttons as illustrated when switching between application versions.



Diagnosing USB Driver Problems:

If your USB consoles fail to switch between Vista V2 and Vista 1.13 using the procedures above, there may be an issue with the USB driver versions.

The driver that Windows associates with a port/device combination can be found as follows:

1. Plug in the device and turn it on.

2. Go into Start -> Control Panel -> System -> Hardware tab -> Device Manager. A Jands Vista product that's been found will appear under "Jands LibUSB-Win32 Devices" – click on the "+" next to it to open it.
3. Right click on the device and select Properties -> Driver tab. The correct driver version for Vista V2 and Vista 1.13(5295) is "1.12.1.0".

If the loaded driver is not this version neither Vista V2 and Vista 1.13(5295) will not work with it. To replace the driver:

1. Plug in the device and turn it on.
2. Go into Start -> Control Panel -> System -> Hardware tab -> Device Manager. A Jands Vista product that's been found will appear under "Jands LibUSB-Win32 Devices" – click on the "+" next to it to open it.
3. Right click on the device and select Uninstall. Follow the prompts.
4. Remove the USB device.
5. Reboot the computer.
6. Install the most recent version of Vista V2. If Vista V2 runs at the end of the installation, exit Vista V2.
7. Plug in the USB device. After a few moments the computer should display the "Found new hardware" dialogue.
8. When Windows asks "Can Windows connect to Windows Update to search for software" select "No, not this time" and click Next.
9. When Windows asks about the installation CD select "Install from a list or specific location [Advanced]" and click Next.
10. When Windows asks you to choose your search and installation options select "Don't search. I will choose the driver to install" and click Next.
11. Select a driver that includes the text "1.12.1.0 [13/07/2010]" and click Next.
12. Click Finish.
13. Verify correct operation.