



SOFTWARE RELEASE NOTES

Release date 25 September, 2008 *Supersedes version #* 1.12.4984
Software version 1.13.5069 *(PC/MAC version #* 1.12.4984
Firmware version [S3/I3/S1:492, M1:438] *Released on* 30 July, 2008
Library Version 3.12.1

Important Information

This software is distributed as a complete disk image for Vista T2, T4 and I3 consoles, which requires the hard-drive in these consoles to be re-imaged from CD or USB stick. Windows and Mac versions of the software are distributed as an application installation package and are not affected by this requirement.

Windows and Mac versions of the software are distributed as an application installation package and are not affected by this requirement.

This software can be installed over any previous version of Vista. It is not a pre-requisite to have a particular version of Vista installed on your console or computer before installing this software.

Warning! Installation of this software on a T2, T4 or I3 console will erase all saved shows and other data. You must manually backup or archive all your existing show data (the contents of the /data/ directory) to an external storage device.

After downloading this software, we recommend verifying that the software downloaded correctly by calculating the "MD5" checksum of the file and comparing it to the MD5 checksum shown below.

Build Type	MD5 Checksum	File Size
Console installer	e6434f0b8904797e0d52e2b24fd2c5cd	290 MB
PC	6300c9bad1333006430415b4c1c441c6	34.5 MB
MAC	fa5653f797a6636083ab455cf77b26dd	45.2 MB

For more information, please refer to the "Installation Instructions" section at the end of this document.

What's New

In this release of Vista the following areas have had improvements, including functional enhancements. An updated copy of the Vista User Guide is available from www.jandsvista.com.

- **Date & Time Events Panel:**
 - Added a method to playback clips, trigger snapshots and enable/reset timecode using the console/computer time and date. Accessible via "Date/time events panel..." in the Vista menu, the "Date/time events" panel allows you to specify days, times, start and stop dates and repeat intervals for any number of Date/Time events.

- **Timeline View:**
 - When a clip is first opened, the view now zooms onto the current step.
 - Added a dark grey line to clearly distinguish step borders.
 - Improved timeline window scrolling so the view does not shift when clicking on an event that extends outside the current view, as long as that event is in the same step.
 - Added option to view the timeline index points in an unscrollable region at the top of the timeline.
 - Added "Insert mark events/step..." option to events right-click context menu.
 - Events dragged to 0s duration now snap to 0.1s length with a snap-start fade path, in the same manner as all other 0s event settings
 - When events are automatically set to a snap start fade path (via setting them to 0s or using Active HTP), all subsequent events will now use the original default fade path, rather than inheriting the snap-start fade path.

- **Quick Picker:**
 - Changed geometry of components in Quick Picker to allow easier selection using touch screens and other pointing devices.
 - Presets, Extracts and Canned Effects now display 2 lines of text.
 - Added ability to rearrange items directly within the Quick Picker, by holding Alt while dragging the items.
 - Added support for multiple columns in the Quick Picker.
 - Added Arrange in grid view context menu item that tiles all items in a grid using simple left-right flow.

- **Patch window:**
 - Added a "..." button next to the fixture type dropdown in the "Properties" tab, which allows you to change fixture types via a tree view.
 - Added actual keypad labels to onscreen Patching keypad. E.g. @ (*).

- **Output window:**
 - Fixture selection is now displayed in the Output window.
 - Added "Follow selection" checkbox and "Reset" button. When "Follow selection" is ticked, fixtures are dynamically sorted in the order you select

What's New

them in the programmer. "Reset" puts the fixtures back to ID order, while unticking "Follow selection" maintains the current order.

- **Live Time Selector:**

- Added a new Live Time Selector dropdown box for the Live Tab toolbar which is synced to the Live Time Selector dialogue, and allows setting of the Live Fade Time without opening the dialogue. Ctrl-T keyboard shortcut draws focus on the dropdown, and keyboard allows direct entry of fade times.

- **Sort dialogue:**

- Added "Shift Left" and "Shift Right" buttons to allow selection of the next or previous logical grouping in a subset selection. E.g. A custom subset of 1:2 selects fixtures 1, 4, 7, etc. Pressing "Shift Right" gives you fixtures 2, 5, 8, etc.

- **Step list:**

- The Step List will now automatically scroll to the current step when a clip is opened.
- Added "Insert mark events/step..." option to Step List right-click context menu.

- **Components window:**

- Components can now be placed anywhere on the Components page grid.
- User defined pages can now remember the IPCGBM masking for that page, via the "Set current mask as default" right-click option on the page/tab header.
- Changed geometry of items in Components to allow easier selection using touch screens and other pointing devices.
- Presets, Extracts and Canned Effects now display 2 lines of text.
- Added ability to rearrange items without being in arrange mode, by holding Alt while dragging the items.
- Added Arrange in grid view context menu item that tiles all items in a grid using simple left-right flow.
- Added better drag/drop indication of components being moved.

- **Fixture Chooser:**

- Added the ability to assign a fixed colour or gobo to a fixture in the fixture chooser, so that generic dimmers and other such fixtures can display the actual colours and gobos that are installed.
- Changed zoom behaviour so it tries to ensure that all selected icons are visible.

- **Programmer Palettes:**

- Added an ability to reverse direction of gobo, prism, colour and shutter rotate controls, using an "Invert" option in the right-click context menu for all sliders that display positive and negative values.
- Controls are now greyed out when they do not apply to the current fixture using next/previous fixture selection tools.

- **Clip Properties:**

- Added "Release all on activate", which releases all other clips when the clip is first activated.
- Added "Keep non-intensity static during release" option which, when a clip is released, fades out intensity first before releasing all other parameters.
- Added an "Auto-lock in page" option which automatically locks a clip to any playback while the clip is playing, and unlocks when the clip is released, so that when you change page or run a snapshot, the clip will remain on the playback.
- Added an "Ignore release in snapshots" clip property which prevents a clip from being released by triggering a snapshot. This is turned on automatically when Active HTP is set to on.

- **Insert Commands:**

- Added Snapshots as an insert command.
- Added option to "Insert at cursor", which places inserted commands at the left hand yellow cursor, rather than the playhead position, in a clip.
- Added a 'Browse...' button beneath the clips list that opens a dialogue allowing clips to be selected using the components view layout.

- **Programmer**

- Proper playback behaviour for looping, jumping etc is now respected while a clip is open for editing in free mode, while no changes are being made to the clip itself.
- Added an "All active clips" filter to the clip list in the Store Live dialogue.
- Added actual keypad labels to onscreen Programming keypad. E.g. @ (*).
- Added [dot][dot][enter] sequence to clear programmer from Programmer keypad.
- Added an option to not release clips when closing them in the programmer, via a "Don't release clips when closed" user preference together with a 'close (don't release)' programmer tab context menu item.
- Added a "Start-edit mode" option in the User Preferences Programmer tab for choosing whether clips open for editing in Free or Normal mode.
- Changed default settings in Presets Record Dialogue for updated presets, so that presets are automatically updated with "only selected/active fixtures" checked.
- Added Ctrl-R keyboard shortcut for "Assign selected fixtures to track..."

- **Smart FX**

- "Spread" control can now be set up to 999%, allowing Smart FX to repeat its waveform up to 10 times within a fixture selection.
- Added IPCGBM labels to Canned Effects.

What's New

- **Playback Control Window**
 - Added an option to always show the contents of the Super Playback in the Playback Control Window, via the "Follow Default Super Playback" checkbox. Where there is more than one Super Playback in a system, it is possible to set the 'default' Super Playback via a context menu in the Console window (right-click on the lcd of a superplayback and select 'set as default').

- **Snapshots**
 - Snapshots are now automatically updated whenever all the pages on a playback group are moved to a new playback group by holding the red modifier/shift (which moves all pages on the playback group at once). Note:
 - Any existing pages on the new playback group that was updated are removed from the snapshot.
 - You must be in Page 1 when you move the pages to retain correct page ordering

- **Alternate Language Keyboards**
 - This release includes the ability to use alternate language keyboards on T4, T2, and I3 consoles. For further details about accessing this facility, please contact your distributor.

- **DMX**
 - The DMX data packets have been slowed down slightly in the T4, T2, I3, S3, and M1 consoles so as to improve operation with low spec DMX receivers. The update rate (ie packets per second) has been maintained at the same rate as for previous versions.

- **RGBA Library**
 - A translation function that automatically generates the A channel for RGBA fixtures has been developed. This function has been included in the RGBA(V2) fixtures in the "New -> Generic" library. To use this function, patch the 4 channel RGBA fixture as normal. The Amber channel will automatically be generated from the colour selected on the colour picker.

- **Group Masters**
 - HTP Group Masters can now contain separate levels for each fixture contained in the group.

What's New

- **Boot Menu**

- The red LILO Boot menu now includes separate VNC and Mirror mode options, each with a corresponding 1024 x 768 mode. The table below summarises the LILO options.

LILO Boot Option	Tablet/Primary Display data	Secondary Display data	VNC Remote Display	Intended Application
Normal	Vista Main	Secondary	Disabled	Use for normal operation
VNC	Vista Main	Secondary	Vista Main	Use when VNC is required
Mirror	Vista Main	Vista Main	Vista Main	Use for demonstrations

Each corresponding "1024x768" mode uses the same configuration as above however the main display is forced to a resolution of 1024x768 pixels. This is useful if a display with limited resolution is being used e.g. a projector or old display, the display or interconnections do not support monitor data readback, or in the case of VNC the remote display is small e.g. an iPhone, tablet PC, or PDA.

The previous means of enabling VNC/mirror modes (i.e. holding down tablet function buttons at start-up) have been disabled.

- **I3 Monitors**

In the Linux builds the support for higher resolution monitors has been improved with the inclusion of a window manager. Where previously the main Vista window was a fixed size, this window can now be resized at will if a monitor with resolution of greater than 1024x768 is fitted. To use the window manager:

1. The primary monitor must have a resolution greater than 1024x768 pixels. If only one monitor is connected to an I3 at startup, that monitor will become the primary monitor. If two monitors are connected, the monitor connected to the DB15 (VGA) connector will become the primary monitor.
2. Ensure the monitors are connected and switched on before the console is started.
3. In the red "LILO" boot menu select a mode that doesn't force the output to 1024x768 e.g. Normal, VNC, or Mirror.
4. Boot the console as normal. Once the console has started an additional grey bar will appear above the normal blue bar at the top of the main Vista window. Double clicking on the grey bar toggles full screen display of this window.

If the primary monitor is 1024x768 or less (e.g. T4, T2 console), the window manager is disabled.

Resolved Bugs & Issues

Below is a full list of bug fixes contained in this release:

Bug #	Description
1741	Only show controls relevant to current fixture when using Next/Previous fixture buttons
1742	Enforce minimum event length for events dragged to 0s
1760	Add an assigned function, delete a different assigned function -> crash
1826	Inconsistent fixture numbering when patching multiple copies
1852	Programmer should inherit blind mode state when exporting to a new clip
1905	Step rename/renumber/loop dialog retains focus after enter press
1968	Playing multiple steps simultaneously doesn't crossfade smoothly
2065	Output window 'Text' and 'Source' views do not display Group Master levels
2136	Clip set to SMPTE on will automatically go first step when global LTC disabled
2198	Fade curves not honouring default setting after minimum fade time or Active HTP applied
2226	Fixture editor crash when changing # channels for a patched fixture
2286	Fixture selection lost after "Arrange in grid..."
2288	Overnight trunk builds are labelled 1.11.XXXX
2367	patch lights, touch intensity: crash
2374	svn trunk started failing builds (linux/Mac) on 7th May 2008
2376	Event triggered by date/time automation crashes console
2386	Clips are not releasing after Store Live operations
2390	HTP Intensity clip property not set by Active HTP
2394	Grey step boundary lines appearing at start of every event
2395	Rearranging Components and Quick Picker items does not mark show as modified
2400	Up/Down buttons hidden for Repeat section of Date/Time Event Properties dialogue
2406	Font size of component labels in Components and Quick Picker too small
2407	Fixture chooser fonts are difficult to read
2415	"Open Clip..." dialogue does not respect components view arrangements
2416	Chase clips with Crossfade % less than 100% don't playback correctly
2418	Insert Commands "Browse" window sits underneath Insert Commands dialogue
2419	Live Time keyboard shortcut should select all text in Live Time dropdown
2427	0s steps break << and >> buttons
2442	Crash when moving a whole playback group after running a snapshot

Fixture Library Changes & Additions

Manufacturer

American DJ

Model

Mega Bar 11 channel
Mega Bar 2 channel
Mega Bar 3 channel
Mega Bar 4 channel
Mega Bar 7 channel

ColorKey
iSolutions

LED Par 64
iColor-4
iLaser
iShow-3
Madrix Small

Madrix

Showco

Eled B48 12 channel
Spot 1200SE
Wash 1200

Wiedamark

LED P64S_B

Known Issues

The issues listed here are known issues in Vista. These issues may or may not be resolved in a future release of Vista software. Additional reports on these or any other issues are welcome, or for more information please contact Jands.

Each issue is broken down as follows:

- An ID that Jands uses to track the issue followed by a summary
- The Description field provides more details about the issue
- The Workaround field may give you additional information about how you can work around that particular issue. If it says "None" there is no currently suggested workaround for that particular problem.

1736 Non-administrator accounts can't save user preferences on Vista App for Windows

Description When running Vista on a Windows XP machine where you are not logged in as the administrator it will not let you change any user preferences settings – an error dialog appears saying "Cannot save user preferences".

Workaround None available. Note that non-administrators cannot install Vista App for Windows.

1973 Inability to fade from raw->generic values

Description It is not possible to transition from a raw setting to a generic setting - the generic fixture model only operates in one direction. This manifests when (for example) you first use the generic controls to setup a base colour, then apply a raw transparent ColorFX preset over the top of that (the colour will track through) then you apply another generic colour over the ColorFX preset (the preset will not track through and the channel will return to default).

Workaround If the ColorFX preset is applied from a separate clip running at a higher priority, then it will always be the last link in the chain and the transition will work properly.

1979 Can't see Ether-Lynx from Vista PC after running DMX-Workshop

Description If you have Artistic Licence DMX-Workshop running, VistaPC doesn't see the Ether-Lynx connected either via crossover cable or through a network.

Workaround Close DMX-Workshop and restart the Vista application. If that doesn't work, it's possible that DMX-Workshop did not start/stop cleanly and so is still running a process - open task manager and kill the process and then restart the Vista application.

Installation Instructions

Archive your data

Before updating the console, Jands recommends that all users archive all show data. This process describes the procedure to be followed to access show files that are on the Vista T4, T2, and I3 console hard drives.

There are two methods to access show files and other data – Export via USB and File Transfer Protocol (FTP).

Archiving and Exporting Files via USB

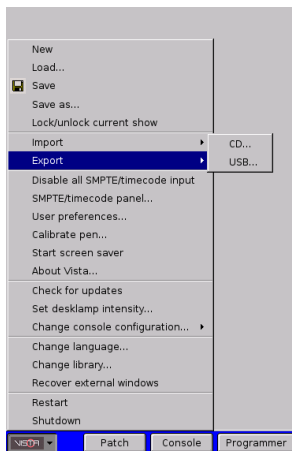
Parts Required

- USB Stick of an appropriate size. This will be determined by the amount of data to be archived or exported.

Procedure

1. Start the console in the normal manner.
2. Once the console has completed the boot up sequence, insert a USB disk. The slot in the armrest is recommended because of ease of access.
3. On the console, open the "Vista" Menu.
4. Select "Export".
5. Select "USB" (as illustrated in Figure 1).

Figure 1 - Vista Menu to Export Files



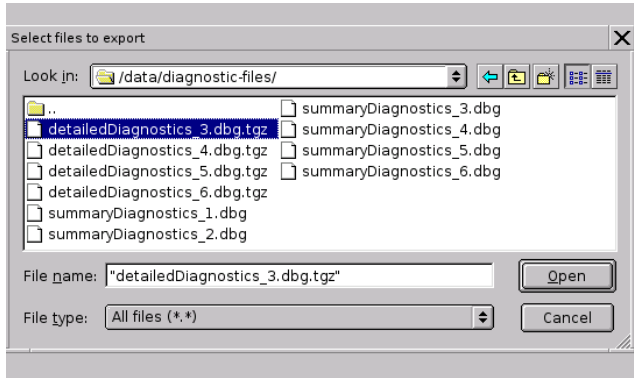
Vista will default to the "Data" directory.

If exporting the consoles diagnostics files, open the folder entitled "diagnostic files". Show files that are being archived are found in the "data" directory.

Vista will ask the user to select the files to be exported (See Figure 2)

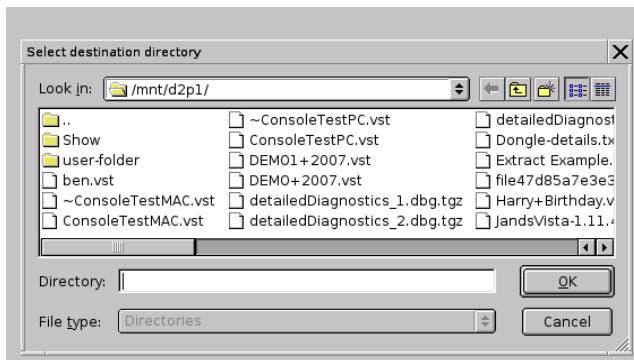
Installation Instructions

Figure 2 - Selecting Files to be Exported



6. Once the files have been selected, Vista requires the user to select a destination directory. Vista will default to the USB drive if a USB device has been installed correctly.

Figure 3 - Selecting Destination Directory



7. Press "OK" and once the files have been transferred, remove the USB drive.

Files are now ready for archiving or sending to another party.

Installation Instructions

Archiving and Exporting Files via FTP Client

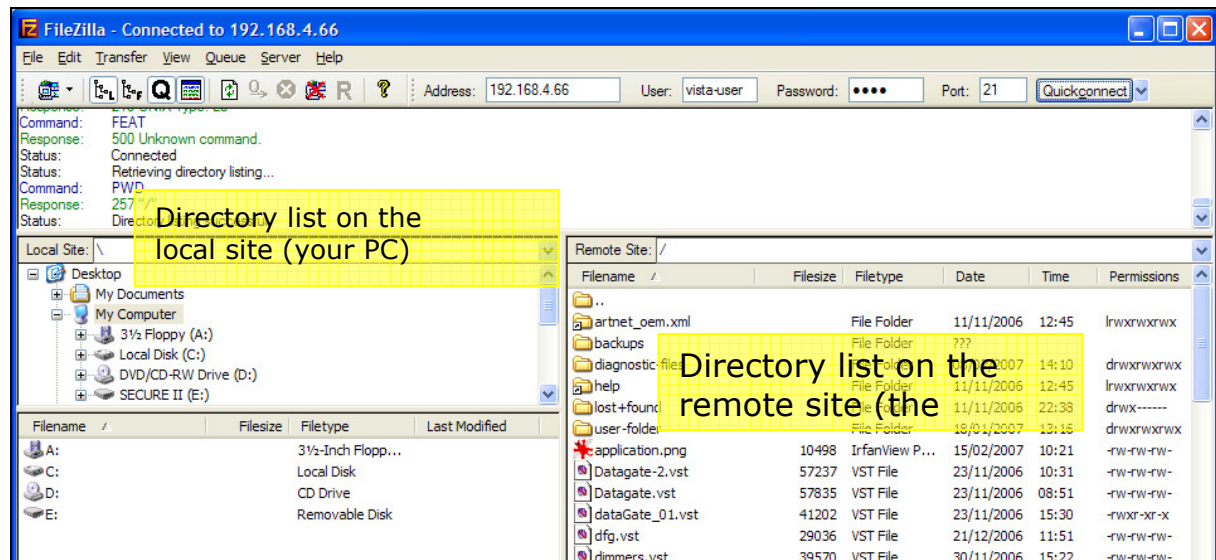
Jands recommends using a graphical FTP client such as FileZilla (<http://filezilla.sourceforge.net/>) to simplify the process.

Note – This is a suggestion based on an internet search. Our suggestion should not be taken as endorsement of any one of these programs.

The console must be connected to a network. Its IP address can be viewed and set through the Vista User Preferences dialog. Connection details:

- FTP server address: The IP address of your console.
- FTP username: vista-user
- FTP password: user

Figure 4 - FTP Client Menu



Vista will default to the "Data" menu on the console. Subfolders are also displayed and files can now be transferred to and from the Vista.

To transfer show files from the console to a PC, click on the desired show file on the remote site (the console) and drag them across to the local site (PC), placing them in the desired directory.

Burning .iso CDs for Software Clean Installs

Application

Jands supplies major console software updates as an .iso package. The .iso package is a complete CD image that reinstalls the console operating system as well as installing the new Vista application. These updates can only be applied from a bootable CD, also called an .iso-CD.

Installation Instructions

To successfully update a console it's important that the .iso file is downloaded, burnt to CD, and installed correctly. Before a console is updated please read the following information - If there is any doubt contact your local dealer or Jands before proceeding.

Parts Required

- A PC with CD burning software – such as Nero (www.nero.com), Easy CD Creator (www.roxio.com), Sonic Record Now Plus! (www.sonic.com), Toast etc.

Note that Jands has not tried all these programs, they are simply suggestions resulting from an Internet search and their suggestion should not be taken as endorsement of any of these programs.

- Blank CDs. Jands recommend that CDs of a reputable quality are used.
- A USB memory stick or other method to backup your important show files.

It's also recommended that a copy of a previous software version be available in case there is a need to revert to the older version.

Procedure

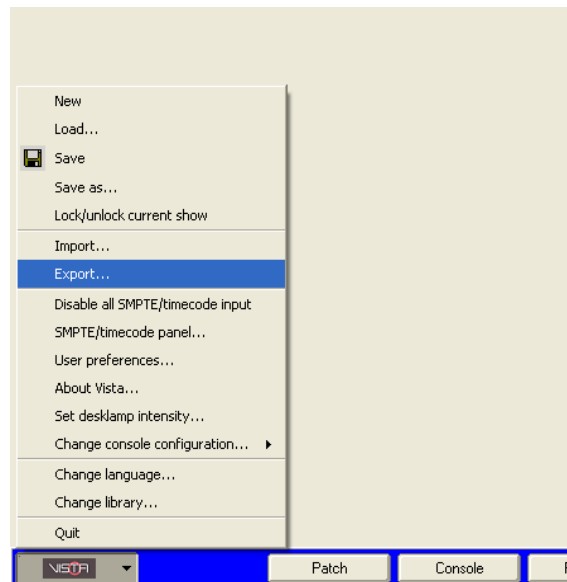
1. Backup any show files

Before updating the console important show data files (stored in the /data/ directory) must be backed-up – the internal hard drive will be completely erased during the installation process.

To backup show files, either manually export each show to a CD or USB memory device, or use FTP to remotely transfer files from the console to another computer.

To export your files to a CD or USB, open the Vista menu and select "Export". Refer to Figure 2.

Figure 5 Vista Menu => Export Show Files



Select either USB or CD as required.

Select the files to be backed-up, then select the destination directory, which is your USB or CD. Once the files have been transferred proceed to Step 2.

To use FTP to remotely transfer files from the console, please refer to the instructions in the Jands Vista user manual and then proceed to Step 2.

Installation Instructions

2. Download the .iso File

The .iso files available on the JandsVista website (www.jandsvista.com/support.html). The file is posted as a zip file and is approximately 350 MB in size, so the time it takes to download is very dependent on your internet connection. Save this zip file to your PC and then extract the .iso file using the normal file extraction procedure.

To assist in downloading large files it is recommended that a download manager application be used within the browser. A download manager allows a download to be restarted if for some reason the connection is broken.

Suggested download managers are:

- FreshDownload (for most Windows operating systems and browsers including IE) <http://www.freshdevices.com/freshdown.html>
- Yazsoft Speed Download (for Mac operating systems) <http://www.yazsoft.com/> .

Note that Jands has not tried these programs, they are simply suggestions resulting from an Internet search and their suggestion should not be taken as endorsement of any of these programs.

3. Verify the .iso File Prior to Burn

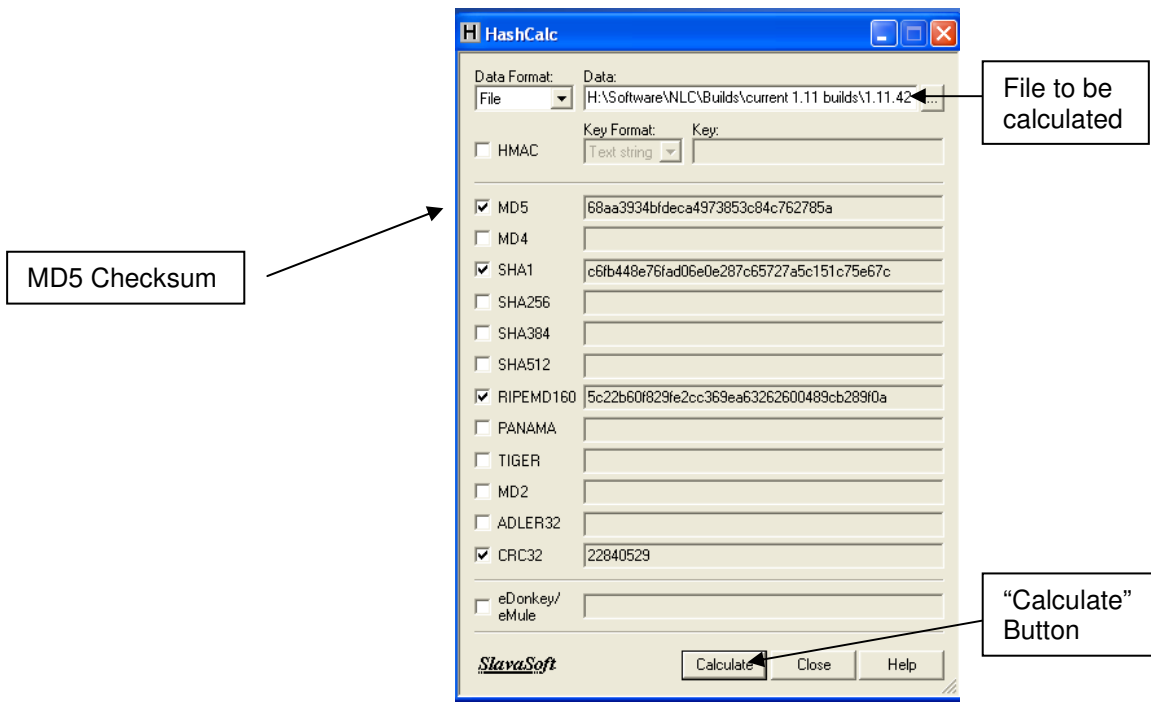
The .iso file is zipped prior to placing it on the Jands Vista website. It is recommended that the .iso file is verified to be certain that it downloaded correctly - this can be done by calculating the "MD5" checksum of the .iso file. Jands calculates the MD5 checksum before uploading and this is published with the release notes so that an exact comparison can be made by the user after downloading.

To check the MD5 checksum, ensure that the .iso file has been extracted from the zip file and saved/extracted as outlined in Step 2. It is this file that you want to check and then burn to CD to upgrade the console.

Using HashCalc, the MD5 Checksum is determined by:-

1. Pointing the program to the file to be measured
2. Pressing the "Calculate" button
3. Comparing the resulting MD5 checksum against the value shown in the release notes.

Figure 6 - Calculating MD5 Checksum



Programs designed to verify the MD5 checksum include:

- For Windows - HashCalc from <http://www.slavasoft.com/hashcalc/>
- For Macintosh - MD5 <http://www.eternalstorms.at/md5/>

Note that Jands has not tried all these programs, they are simply suggestions resulting from an Internet search and their suggestion should not be taken as endorsement of any of these programs.

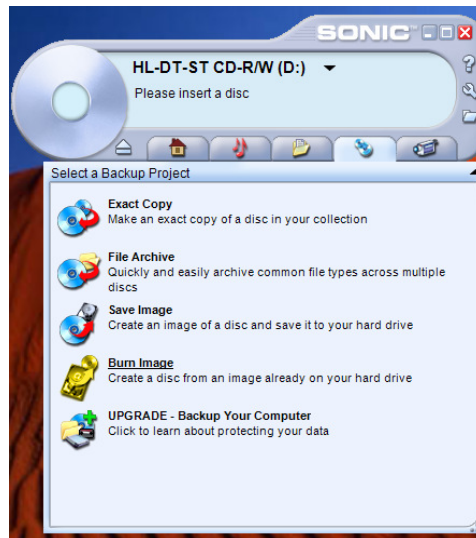
Continued on next page.

Installation Instructions

4. Burning the .iso to CD using a PC

The .iso file is a disk image. Most CD-burning software will have an option to "Make Disk from Image" or similar. (See Figure 4 below)

Figure 7 - Example Image Burning Software Menu



Programs that will burn an .iso to CD include:

- EasyCD Creator
- Nero
- Sonic RecordNow
- Toast – for Macintosh.

These programs are often preinstalled on Windows PCs with a CD burner. However if you do not have suitable software the following links may be of use:

- .iso recorder <http://isorecorder.alexfeinman.com/isorecorder.htm>
- CDBurnerXPPRo <http://www.cdburnerxp.se/>
- BurnCDCC <http://www.snapfiles.com/get/burncdcc.html>
- Mac OS X has an inbuilt utility called "Disk Copy".

Note that we have not tested all these CD burning programs, they are simply suggestions resulting from a Google search and their suggestion should not be taken as endorsement of any one of these programs.

Notes on these programs:-

When burning an image with Nero, users have the option of choosing "Disc@once" and "Track@once". The "Disc@once" option must be selected, otherwise the image will not burn properly.

DO NOT attempt to extract the files from the .iso before burning as this will result in a CD that is NOT bootable. If there is any doubt about burning a CD from the .iso, please consult the documentation that came with the CD burner / software.

Burn the image according to the instructions for the software being used.

Installation Instructions

After the .iso has been correctly burnt to a CD, there will be several files and folders visible in a file manager view of the CD – it should NOT appear on the CD as a single .iso file.

Once the CD has been burnt, remove it from the computer and commence the software clean installation according to the instructions outlined in Appendix 2 of the Jands Vista Manual

For assistance or further details please contact us using the [contact form](#) or email support@jandsvista.com

Note: To restore to Vista-1.12 you will have to reinstall the console from CD again.

5. Burning the .iso to CD Using MAC OSX

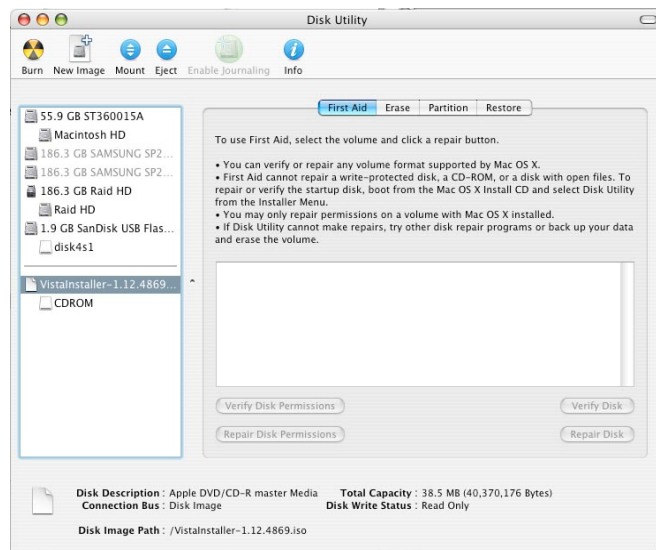
Parts Required

- Macintosh Computer
- Blank CDs. Jands recommend that CDs of a reputable quality are used.
- A USB memory stick or other method to backup your important show files.

It's also recommended that a copy of a previous software version be available in case there is a need to revert to the older version.

Procedure

1. Insert a blank disc.
2. On the toolbar, select the "Go" Menu
3. Select "Utilities"
4. Start Disk Utility.
5. From the Images menu, choose Open and select the ISO to be burned.
6. In the list of volumes, select the item representing the ISO file.
7. Click the "Burn" button and follow the instructions.



Installation Instructions

Once the CD has been burnt, remove it from the computer and commence the software clean installation according to the instructions outlined in Appendix 2 of the Jands Vista Manual

For assistance or further details please contact us using the [contact form](#) or email support@jandsvista.com

Note: To restore to Vista-1.12 you will have to reinstall the console from CD again.

Linux USB ISO Instructions

Application

This procedure describes the process to be followed to create a USB FLASH Drive that can be used to ISO the Vista T4, T2, and I3 console hard drives.

Parts Required

- 512MB or larger USB FLASH drive.

Procedure

The first part of the procedure requires the iso image be opened. This may be achieved by burning the ISO image to CD, or by opening the ISO image directly using a ISO file extractor:

1. Either:
 - Burn an ISO CD using the normal Vista ISO disk burn procedure. Leave the CD in the drive and note the drive letter assigned to the CD eg "D". Or,
 - Open the iso image using a program such as WinRAR. Copy syslinux.exe to a temporary location on the hard drive.

The FLASH drive must now be converted into a linux system disk. **Note that this procedure will erase all data on the FLASH drive, and if not done properly could erase all data on the computer internal hard drive.** Note also that it only has to be done once – if the FLASH drive has previously been converted, skip to step 5.

2. The FLASH Drive must be formatted with the FAT32 file system. Format the FLASH drive in file manager by right-clicking on the drive and selecting the "Format" option. Ensure the File System option is set to FAT32 before clicking the "Start" button.
3. Note the drive letter assigned to the FLASH drive by Windows eg "E".
4. Open a command prompt and using the appropriate drive letters previously noted, type the following:

```
[drive letter\path]:\syslinux -ma [FLASH Drive letter]: -f
```

For example:

```
d:\syslinux -ma E: -f           for a CD as "D" drive, or
c:\temp\syslinux -ma E: -f     if the syslinux.exe is on the hard drive
```

Copy the files to the FLASH Drive:

5. The required files must now be copied from the iso to the FLASH drive. To copy the files type in the following into the command prompt:

Installation Instructions

```
copy [drive letter\path]:\*.* [FLASH drive letter]:\  
copy [drive letter\path]:\isolinux\kernel [FLASH drive letter]:\  
copy [drive letter\path]:\isolinux\initrd.gz [FLASH drive letter]:\  

```

For example:

```
copy D:\*.* E:\  
copy D:\isolinux\kernel E:\  
copy D:\isolinux\initrd.gz E:\
```

The files can also be copied using the Windows file manager direct from the CD or WinRAR. Note that some of the files are large and can take some time to copy.

The FLASH Drive is now ready for use. Note that the console BIOS settings may need to be changed to allow it to boot from the USB FLASH Drive.

To apply the ISO update to the console using the USB device:

- After backing up all data, insert the USB device in a USB port on the console.
- Turn off the console and then power it up again
- The update will commence automatically.
- Follow the prompts on the screen.
- Once the update is completed remove the USB device. The console is now ready for use.