



SOFTWARE PATCH RELEASE NOTES

Release date 19 January, 2010 *Supersedes version #* 1.13.5266/7
Software version 1.13.5278

Firmware version [S3/I3/S1:561, M1:494] *Released on* 25 Nov 2009
Library Version 3.0.1

Build Type	MD5 Checksum	File Size
PC	31d4d7c4a8d4edf89431ecea526ade1	40.7 MB
MAC	188c6a6543c6684bffc545d84bd880a9	47.8 MB
Console	06d39fc0297dc7a0bf544deac132f851	39.9 MB

Important Information

This patch release provides an updated fixture library. New fixtures can be found in the library marked "New"

Mac Build

From version 1.13.5260 the minimum requirement for Vista is Mac OSX V10.5 Leopard. Previous Mac OSX versions, including 10.4 Tiger are no longer supported.

Crash Log Files

The ability for Windows users to generate crash dump log files has been implemented. This will assist in the diagnosis of the cause of some crashes of the Jands Vista application.

However, users will be required to make some changes to their PC when installing this update. *Unless these changes are made, the log files will not be generated. The application cannot access these files retrospectively.*

Full instructions can be found in Technote Tbjlt134.

Note: Not all crashes will generate a log file. This may be more to do with some components of Microsoft Windows rather than Jands Vista. Jands are not able to configure the application to ensure that all crashes create log files.

Bugs fixed in this release

There were no bugs fixed in this patch release.

Fixtures added in this release

Manufacturer

American DJ

Model

Emerald Scan II

Galaxian 3D

Revo I

I

American Pro

Neo 108L Basic

Neo 108L Standard

Neo 36L 3 channel

Neo 36L 4 channel

Neo 36L 6 channel

Neo 50L 4 channel

Neo 50L 8 channel

Neo 60L Basic

Neo 60L Standard

Neo 70L 4 channel

Neo 70L 8 channel

Neo 1300 16 bit

Neo 1300 8 bit

Neo 400 Basic

Neo 400 Extended

Neo 400 Standard

Neo 800 16 bit

Neo 800 8 bit

Chauvet

Legend 6500 Advanced

Legend 6500 Basic

Clay Paky

Alpha Beam 700 Standard - lamp off

Alpha Beam 700 Standard - lamp on

Alpha Beam 700 Vector - lamp off

Alpha Beam 700 Vector - lamp on

Coolux

Pandoras Box MediaPlayer LT v3.5

Camera_Output with Softedge upgrade

Pandoras Box MediaPlayer LT v3.5

Camera_Output

Pandoras Box MediaPlayer LT v3.5 Graphic Layer

Pandoras Box MediaPlayer LT v3.5 Sequence Library

Jands Vista Software Patch Release 1.13.5278 Release Notes
19 January, 2010

Jands Pty Ltd, 40 Kent Rd, Mascot, NSW, 2020, Australia
Phone: +61 (2) 9582 0909 Fax: +61 (2) 9582 0999 Web: www.jandsvista.com

Page 2 of 16

Pandoras Box MediaPlayer LT v3.5 Video Layer
 Pandoras Box MediaPlayer Pro v3.5
 Camera_Output with Softedge upgrade
 Pandoras Box MediaPlayer Pro v3.5
 Camera_Output
 Pandoras Box MediaPlayer Pro v3.5 Graphic
 Layer
 Pandoras Box MediaPlayer Pro v3.5 Sequence
 Library
 Pandoras Box MediaPlayer Pro v3.5 Video Layer
 Pandoras Box MediaPlayer Standard v3.5
 Camera_Output with Softedge upgrade
 Pandoras Box MediaPlayer Standard v3.5
 Camera_Output
 Pandoras Box MediaPlayer Standard v3.5
 Graphic Layer
 Pandoras Box MediaPlayer Standard v3.5
 Sequence Library
 Pandoras Box MediaPlayer Standard v3.5 Video
 Layer
 Pandoras Box MediaServer v3.5 3D
 Camera_Output with Softedge upgrade
 Pandoras Box MediaServer v3.5 3D
 Camera_Output
 Pandoras Box MediaServer v3.5 3D Graphic
 Layer
 Pandoras Box MediaServer v3.5 3D Video Layer
 _Pandoras Box MediaServer v3.5 Timeline
 Control

Creative Lighting Solutions

RGB Dennis
 RGB LED Par 56 3 channel
 RGB LED Par 56 5 channel

DML

2028
 Cylight 1000S

DTS

Arc 1200 6 channel
 Arc 150
 Arc 250
 Arc 400
 Arc 575 4 channel
 D150 5 channel
 D30
 Delta 7 RGB B
 Delta B Triled
 Delta B
 Delta F Triled
 Delta F
 Delta R Triled White

Jands Vista Software Patch Release 1.13.5278 Release Notes
 19 January, 2010

Jands Pty Ltd, 40 Kent Rd, Mascot, NSW, 2020, Australia
 Phone: +61 (2) 9582 0909 Fax: +61 (2) 9582 0999 Web: www.jandsvista.com

Page 3 of 16

Delta R Triled
Delta R
Delta S Triled
Delta S
Helios R RGB 6 channel
Helios R RGB 9 channel
Helios RGB 6 channel
Helios RGB 9 channel
Titan Solo Full Colour 6 channel
Titan Solo Full Colour 9 channel
Titan Solo RGBA 10 channel
Titan Solo RGBA 6 channel
Titan Solo White 10 channel
XM 1200 Spot 30 Channel
XM 2500 Spot 18 Channel
XM 2500 Spot 30 Channel
XR 250 Spot 10 channel
XR 250 Spot 14 channel
XR 250 Spot 8 channel
XR 250 Wash 10 channel
XR 250 Wash 14 channel
XR 250 Wash 16 channel
XR 250 Wash 8 channel
XR 5 Spot 21 channel
XR 5 Wash Mode 1
XR 5 Wash Mode 2
XR 7 Spot 10 channel
XR 7 Spot 14 channel
XR 7 Spot 16 channel
XR 7 Spot 8 channel
XR 7 Wash 10.16
XR 7 Wash 10.8
XR 7 Wash 14.8
XR 7 Wash 16.16
XR 7 Wash 8.8
XR 8 Spot 20 Channel
XR 8 Wash
XR 9 Spot
XR1200 Wash Mode 1
XR1200 Wash Mode 2
XR700 Wash Mode 1
XR700 Wash Mode 2

Derksen

Magazine Shutter Syncro
Magazine

Diversitronics

ESM-DMX A
ESM-DMX S4

Divine

Hyper 363 Wash

Jands Vista Software Patch Release 1.13.5278 Release Notes
19 January, 2010

Jands Pty Ltd, 40 Kent Rd, Mascot, NSW, 2020, Australia
Phone: +61 (2) 9582 0909 Fax: +61 (2) 9582 0999 Web: www.jandsvista.com

Page 4 of 16

Doug Fleenor Designs	iPlayer 2 Interface
Dune	Triple D
Eagle Fai	EA-8091 Mode 1 EA-8092 Mode 1
Elation	Active Scan 250 Active Wave 250 Design LED 108IP 3 channel Design LED 108IP 4 channel Design LED 108IP 6 channel Design LED 36 3 channel Design LED 36 6 channel Design LED 36 MH 16 bit Design LED 36 MH 8 bit Design LED 36 Pro 3 channel Design LED 36 Pro 4 channel Design LED 36 Pro 6 channel Design Wash LED 60 16 bit Design Wash LED 60 8 bit
Elektralite	LXE 700 Wash 16 bit LXE 700 Wash 8 bit Paintcan 1 (v2)
Eurolite	P64LED Pro TS-5
Green Hippo	Hippotizer-V3(Timeline Control)
Longman	S-250B
Lumi Professional	LED 700 MKII
Martin	Mac 401 HS - PGRP 1 Mac 401 HS - PGRP 2H Mac 401 HS - PGRP 2V Mac 401 HS - PGRP All Maxedia v3.0 Base Extended Maxedia v3.0 Base Standard Maxedia v3.0 Layer Adjust Maxedia v3.0 Output Adjustment Maxedia v3.0 Pixelmap Group Maxedia v3.0 Pixelmap Master Maxedia v3.0 Top Layer
Robe	ColorBeam 700E AT Mode 1 ColorBeam 700E AT Mode 2 ColorBeam 700E AT Mode 3

Jands Vista Software Patch Release 1.13.5278 Release Notes
19 January, 2010

Jands Pty Ltd, 40 Kent Rd, Mascot, NSW, 2020, Australia
Phone: +61 (2) 9582 0909 Fax: +61 (2) 9582 0999 Web: www.jandsvista.com

Page 5 of 16

ColorBeam 700E AT Mode 4
ColorBeam 700E AT Mode 5
Robin 300E Beam Mode 1
Robin 300E Beam Mode 2
Robin 300E Beam Mode 3
Robin 300E Spot Mode 2
Robin 300E Spot Mode 3
Robin 300E Wash Mode 2
Robin 300E Wash Mode 3

Stage Ape Ape Par 38 LED 86
Ape WIDE 64

Terbly V1500T
V575S

All new fixtures can be found in the "New" library of the Jands Vista application.

Known Issues

The issues listed here are known issues with Vista. These issues may or may not be resolved in a future release of Vista software.

Additional reports on these or any other issues are welcome, or for more information please contact Jands.

Each issue is broken down as follows:

- An ID that Jands uses to track the issue followed by a summary
- The Description field provides more details about the issue
- The Workaround field may give you additional information about how you can work around that particular issue. If it says "None" there is no currently suggested workaround for that particular problem.

1736 Non-administrator accounts can't save user preferences on Vista App for Windows

Description When running Vista on a Windows XP machine where you are not logged in as the administrator it will not let you change any user preferences settings – an error dialog appears saying "Cannot save user preferences".

Workaround: None available. Note that non-administrators cannot install Vista App for Windows.

1973 Inability to fade from raw->generic values

Description It is not possible to transition from a raw setting to a generic setting - the generic fixture model only operates in one direction. This manifests when (for example) you first use the generic controls to setup a base colour, then apply a raw transparent

Jands Vista Software Patch Release 1.13.5278 Release Notes
19 January, 2010

Jands Pty Ltd, 40 Kent Rd, Mascot, NSW, 2020, Australia
Phone: +61 (2) 9582 0909 Fax: +61 (2) 9582 0999 Web: www.jandsvista.com

Page 6 of 16

ColorFX preset over the top of that (the colour will track through) then you apply another generic colour over the ColorFX preset (the preset will not track through and the channel will return to default).

Workaround: If the ColorFX preset is applied from a separate clip running at a higher priority, then it will always be the last link in the chain and the transition will work properly.

1979 Can't see Ether-Lynx from Vista PC after running DMX-Workshop

Description If you have Artistic Licence DMX-Workshop running, VistaPC doesn't see the Ether-Lynx connected either via crossover cable or through a network.

Workaround: Close DMX-Workshop and restart the Vista application. If that doesn't work, it's possible that DMX-Workshop did not start/stop cleanly and so is still running a process - open task manager and kill the process and then restart the Vista application.

2474 Clips with inserted commands perform strangely then hang

Inserting commands, particularly snapshots, into clips can cause playback to become unreliable. Continued operation will eventually cause the Vista application to become unstable and crash, even after re-starting.

Work around: Do not use inserted commands until further notice.

2974 Shows programmed in older versions and opened in later versions have missing data

This relates to show files built in versions prior to 1.13.5260.

The issue will be evidenced when it seems that some programming is missing from some fixtures throughout the show once the old show file has been updated to 1.13.5260.

Some fixtures in the "New" library require re-patching when opening show files that are built in versions older than 1.13.5260. There is a conflict with these older version fixtures, which are replaced in the patch with incorrect profiles when the show is loaded.

Jands advises that for show files that were created in versions prior to 1.13.5260 and subsequently updated to this version or later, users check the fixture list below to see if the show file may be affected.

Fixtures affected:

AC Lighting ChromaQ (24frame)

Jands Vista Software Patch Release 1.13.5278 Release Notes
19 January, 2010

Jands Pty Ltd, 40 Kent Rd, Mascot, NSW, 2020, Australia
Phone: +61 (2) 9582 0909 Fax: +61 (2) 9582 0999 Web: www.jandsvista.com

Page 7 of 16

ADB	Warp Motorised Narrow Gobo (External Dimmer)
American DJ	Mega Bar LED 11 channel
American DJ	Mega Bar LED 3 channel
Ayrton	EasyColor 8bit
Clay Paky	Alpha Profile 1200 std
Elation	Design LED 12 brick (6ch)
Elation	Design Spot 250 16 bit (v4)
Generic	LED - RGBA (v1)
Generic	LED - RGBAW (v1)
Martin	Mac700 Wash Extended (v3)
Martin	Martin EFX 600 (m2)

Work around: To fix the show file, locate the affected fixture in the patch, drag it into the fixture pool and change its type back to the original fixture type and re-patch. All generic programming will be restored however some raw DMX programming may be lost.

Installing UD512 USB>DMX Device

This software update includes changes to the Vista UD512 USB>DMX device driver. To install the device correctly, please follow the instructions below:

1. Remove any UD512 devices from the computer
2. Install the Vista software as normal. Please ensure **all** boxes are ticked in the "Choose components" dialogue
3. Connect a UD512 to your computer. You should see:
 - The blue LED within the UD512 flash a couple of times then stay off
 - The Windows "Found new hardware" wizard appear
4. The Found New Hardware wizard will ask "Can Windows connect to Windows Update to search for software?". Select "No, not this time", and click Next
5. You will be asked "What would you like the wizard to do?". Select "Install from a list or specific location (advanced)", and click Next

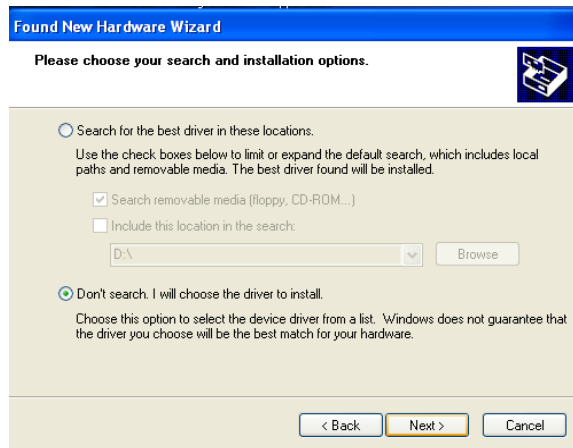


Jands Vista Software Patch Release 1.13.5278 Release Notes
19 January, 2010

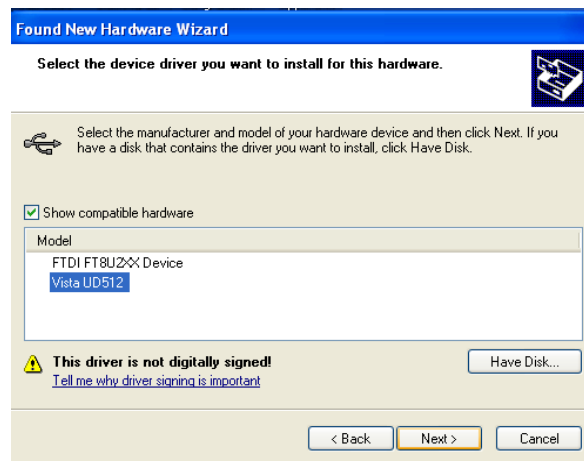
Jands Pty Ltd, 40 Kent Rd, Mascot, NSW, 2020, Australia
Phone: +61 (2) 9582 0909 Fax: +61 (2) 9582 0999 Web: www.jandsvista.com

Page 8 of 16

6. You will be asked "Please choose your search and installation options". Select "Don't search. I will choose the driver to install", and click Next



7. You will see a list titled "Select the driver you want to install for this hardware". Select "Vista UD512" from the list, and press Next

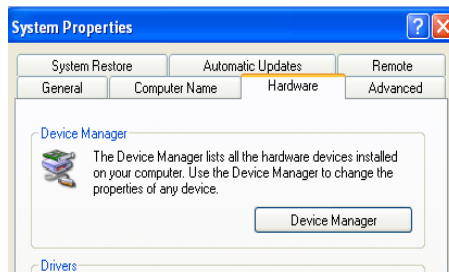


8. The new drivers should now install. Once Windows is finished installing the drivers, click Finish.

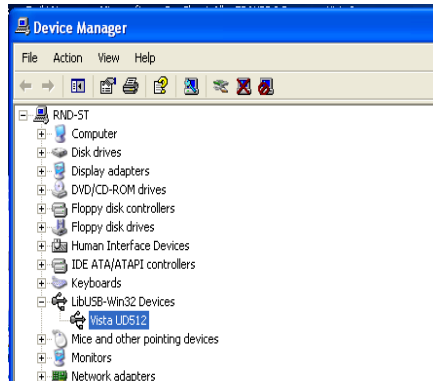
Some users have found that if the UD512 was not uninstalled before commencing the upgrade process, then the installation wizard will not appear.

To resolve this issue:-

1. Open the Windows Device Manager, which can be found by opening the "Control Panel", then selecting "System Properties".
2. Click on the "Hardware" tab and select the "Device Manager" button



3. Locate the driver under "LibUSB-Win32 Devices".



4. Right click on the highlighted device to select "Update driver". This will start the installation wizard.
5. Follow the procedure listed above.

Accessing Files for Archiving and Export

Application

Before updating the console, Jands recommends that all users archive all show data. This process describes the procedure to be followed to access show files that are on the Vista T4, T2, and I3 console hard drives.

There are two methods to access show files and other data – Export via USB and File Transfer Protocol (FTP).

Archiving and Exporting Files via USB

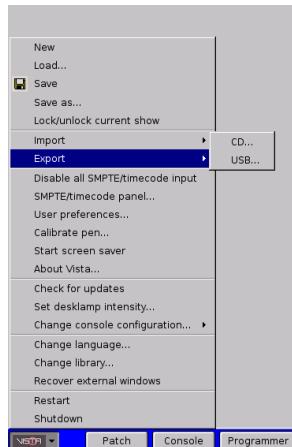
Parts Required

- USB Stick of an appropriate size. This will be determined by the amount of data to be archived or exported.

Procedure

1. Start the console in the normal manner.
2. Once the console has completed the boot up sequence, insert a USB disk. The slot in the armrest is recommended because of ease of access.
3. On the console, open the "Vista" Menu.
4. Select "Export".
5. Select "USB" (as illustrated in Figure 1).

Figure 1 - Vista Menu to Export Files



Vista will default to the "Data" directory.

If exporting the consoles diagnostics files, open the folder entitled "diagnostic files". Show files that are being archived are found in the "data" directory.

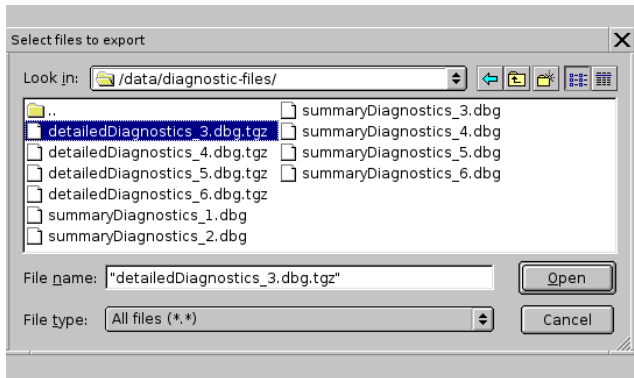
Vista will ask the user to select the files to be exported (See Figure 2)

Jands Vista Software Patch Release 1.13.5278 Release Notes
19 January, 2010

Jands Pty Ltd, 40 Kent Rd, Mascot, NSW, 2020, Australia
Phone: +61 (2) 9582 0909 Fax: +61 (2) 9582 0999 Web: www.jandsvista.com

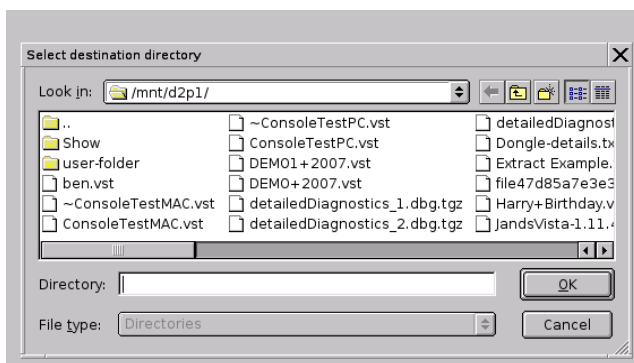
Page 11 of 16

Figure 2 - Selecting Files to be Exported



6. Once the files have been selected, Vista requires the user to select a destination directory. Vista will default to the USB drive if a USB device has been installed correctly.

Figure 3 - Selecting Destination Directory



7. Press "OK" and once the files have been transferred, remove the USB drive.

Files are now ready for archiving or sending to another party.

Archiving and Exporting Files via FTP Client

Jands recommends using a graphical FTP client such as FileZilla (<http://filezilla.sourceforge.net/>) to simplify the process.

Note – This is a suggestion based on an internet search. Our suggestion should not be taken as endorsement of any one of these programs.

The console must be connected to a network. Its IP address can be viewed and set through the Vista User Preferences dialog. Connection details:

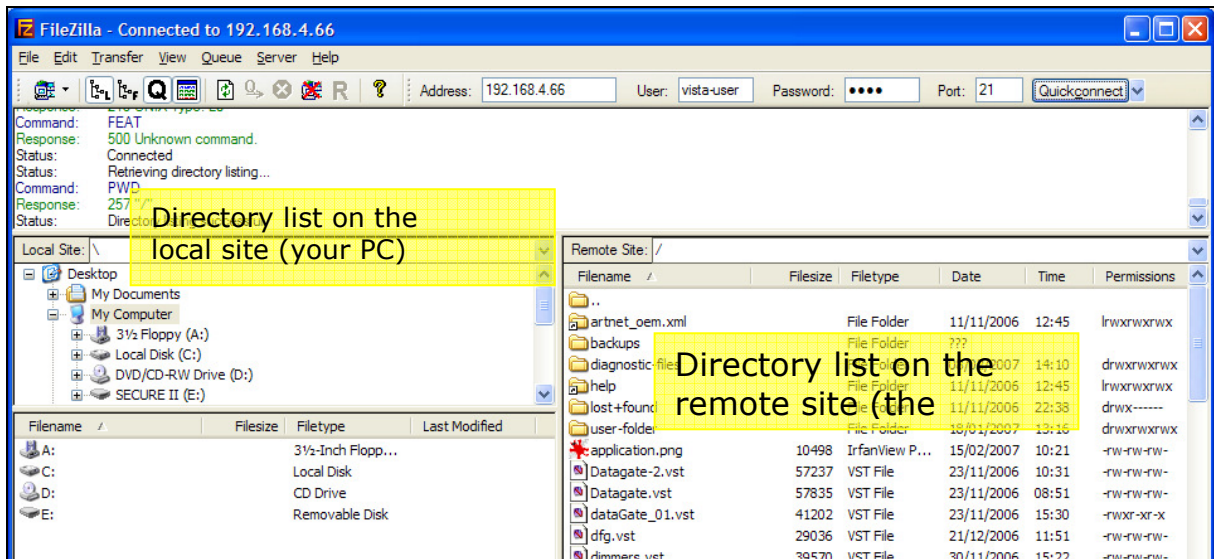
- FTP server address: The IP address of your console.
- FTP username: vista-user
- FTP password: user

Jands Vista Software Patch Release 1.13.5278 Release Notes
19 January, 2010

Jands Pty Ltd, 40 Kent Rd, Mascot, NSW, 2020, Australia
Phone: +61 (2) 9582 0909 Fax: +61 (2) 9582 0999 Web: www.jandsvista.com

Page 12 of 16

Figure 4 - FTP Client Menu



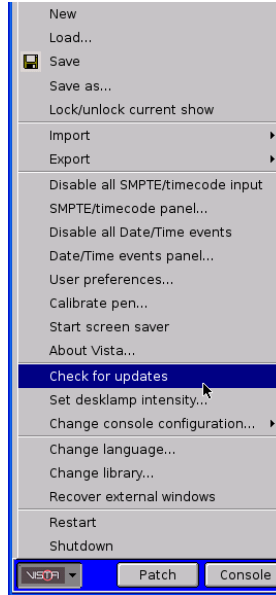
Vista will default to the "Data" menu on the console. Subfolders are also displayed and files can now be transferred to and from the Vista.

To transfer show files from the console to a PC, click on the desired show file on the remote site (the console) and drag them across to the local site (PC), placing them in the desired directory.

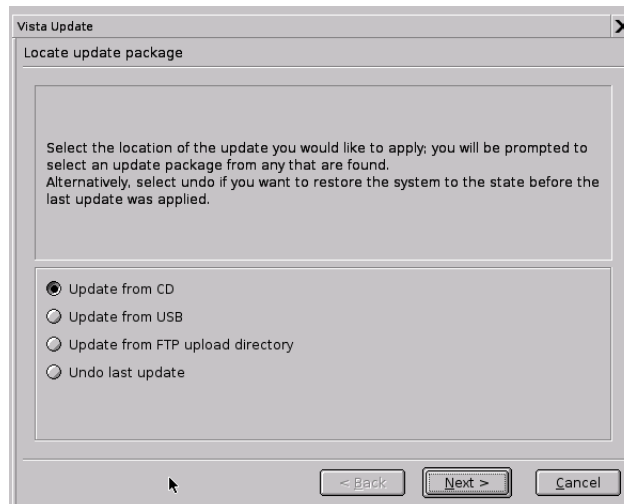
Installation instructions

Installing the update on the "T" or "I" consoles:

- FTP or import (from CD or USB) the vista-update.tgz file to the /vista/update directory.
- Go to the Vista menu and click on "Check for Updates".



The following pop up will appear:

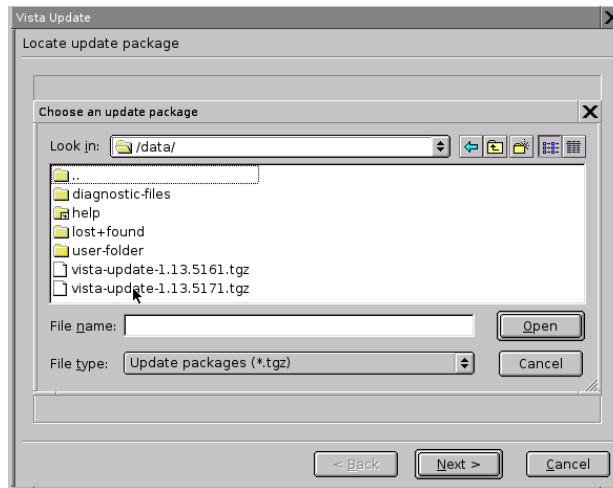


- Select the desired location to update from - "CD", "USB" or "FTP".
- Select the vista-update.tgz file.

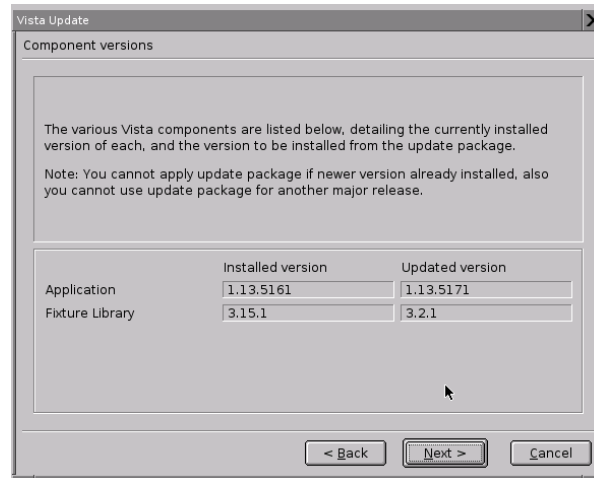
Jands Vista Software Patch Release 1.13.5278 Release Notes
19 January, 2010

Jands Pty Ltd, 40 Kent Rd, Mascot, NSW, 2020, Australia
Phone: +61 (2) 9582 0909 Fax: +61 (2) 9582 0999 Web: www.jandsvista.com

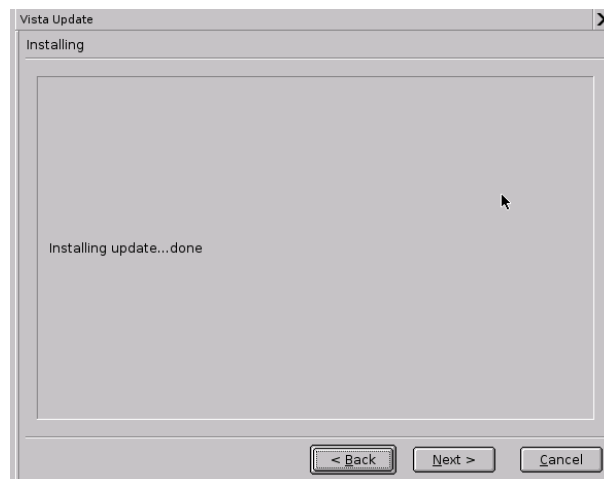
Page 14 of 16



- The following screen listing the update package details will appear:



- Press "Next"
- The following screen will appear when the console has completed the update:



Press "Next".

- The console will shut down once the update is complete.

Installing the PC offline editor:

- Back up existing data directory contents (e.g. show files, standalone fixture files, audio and effects files).
- Extract the "VistaSetup" zip file and copy the VistaSetup.exe file to your hard drive.
- Double click on the VistaSetup.exe file to automatically install the offline editor.

Installing the Mac offline editor:

- Back up existing data directory contents (e.g. show files, standalone fixture files, audio and effects files).
- Copy the vista-update.dmg file to your hard drive.
- Extract the vista-update.dmg file to install the offline editor.
- *Note that HASP drivers have to be installed separately at this stage.*