



Date: 13 November 2008

Linux USB ISO Instructions

Application

This Tech note describes the procedure to be followed to create a USB FLASH Drive that can be used to ISO the Vista T4, T2, and I3 console hard drives.

Parts Required

- 512MB or larger USB FLASH drive.

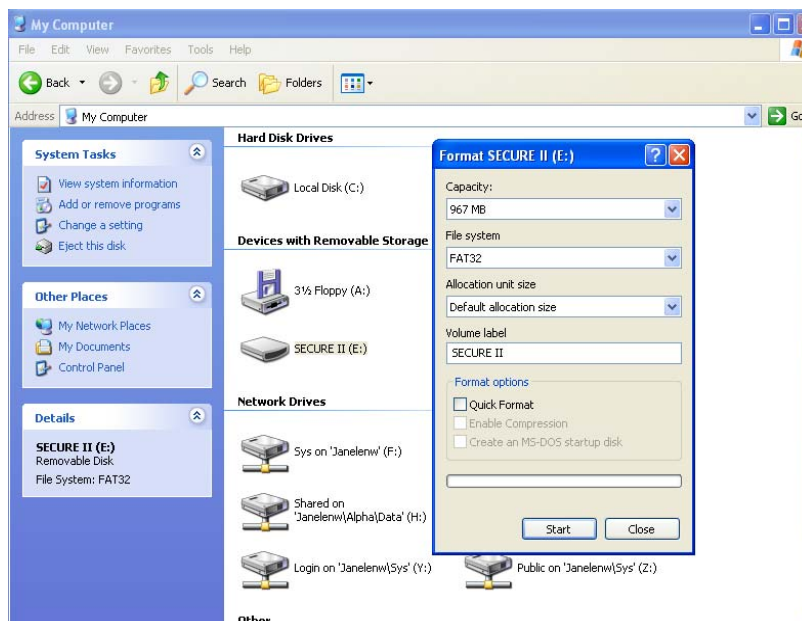
Procedure

The first part of the procedure requires the iso image be opened. This may be achieved by burning the ISO image to CD, or by opening the ISO image directly using a ISO file extractor:

1. Either:
 - Burn an ISO CD using the normal Vista ISO disk burn procedure. Leave the CD in the drive and note the drive letter assigned to the CD eg “D”. Or,
 - Open the iso image using a program such as WinRAR. Copy syslinux.exe to a temporary location on the hard drive.

The FLASH drive must now be converted into a linux system disk. **Note that this procedure will erase all data on the FLASH drive, and if not done properly could erase all data on the computer internal hard drive.** Note also that it only has to be done once – if the FLASH drive has previously been converted, skip to step 5.

2. The FLASH Drive must be formatted with the FAT32 file system. Format the FLASH drive in file manager by right-clicking on the drive and selecting the “Format” option. Ensure the File System option is set to FAT32 before clicking the “Start” button.

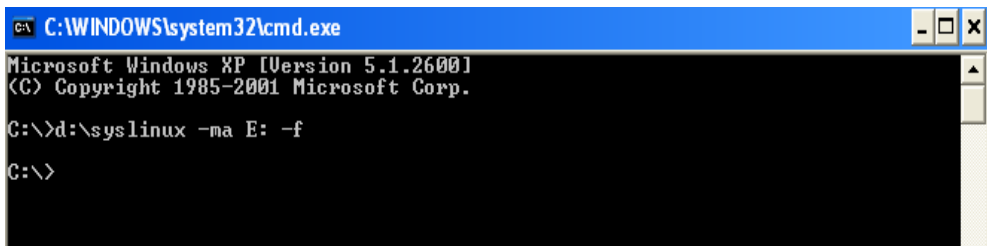


3. Note the drive letter assigned to the FLASH drive by Windows eg “E”.
4. Open a Command Prompt for which the user account is running with administrator-level access. In Windows XP open the Start Menu and select “Run”. Type “cmd” in the box and press enter. In Windows Vista open the Start Menu, select “All Programs”, then “Accessories”, right-click on “Command Prompt” and select “Run as Administrator”.
5. Using the appropriate drive letters previously noted, type the following:

[drive letter\path]:\syslinux -ma [FLASH Drive letter]: -f

For example:

d:\syslinux -ma E: -f for a CD as “D” drive, or
 c:\temp\syslinux -ma E: -f if the syslinux.exe is on the hard drive



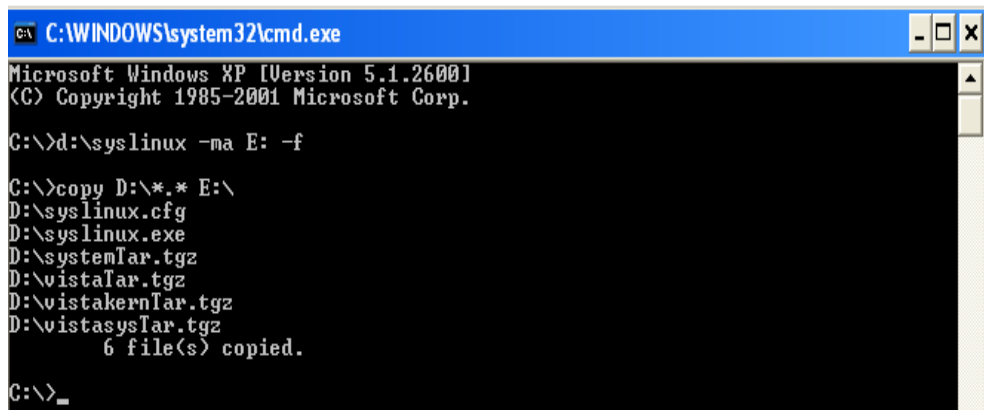
Copy the files to the FLASH Drive:

6. The required files must now be copied from the iso to the FLASH drive. To copy the files type in the following into the command prompt:

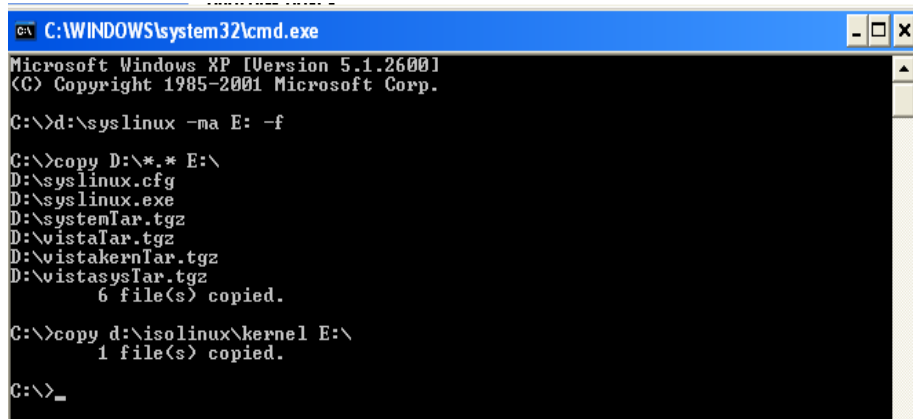
copy [drive letter\path]:*.* [FLASH drive letter]:\
 copy [drive letter\path]:\isolinux\kernel [FLASH drive letter]:\
 copy [drive letter\path]:\isolinux\initrd.gz [FLASH drive letter]:\

For example:

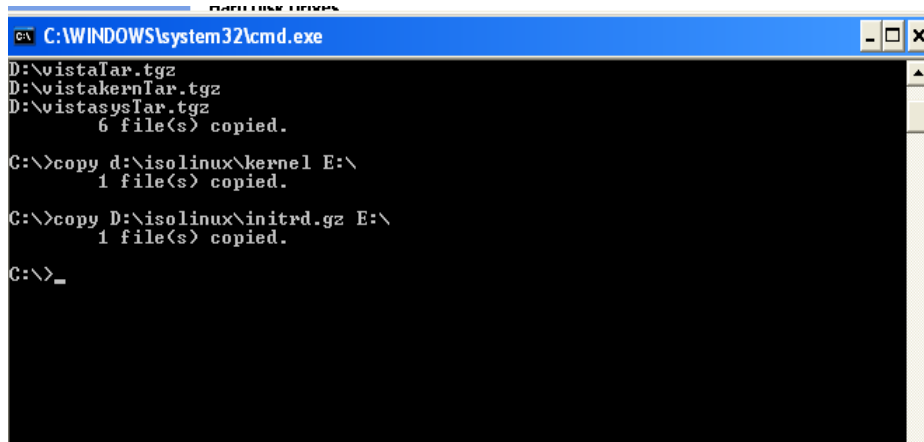
copy D:*.* E:\



copy D:\isolinux\kernel E:\



copy D:\isolinux\initrd.gz E:\



The files can also be copied using the Windows file manager direct from the CD, or from a utility that can read an iso image such as WinRAR. Note that some of the files are large and can take some time to copy. At the conclusion of the copy there should be 8 files on the USB Flash disk.

The FLASH Drive is now ready for use. Note that the console BIOS settings may need to be changed to allow it to boot from the USB FLASH Drive.